

Shrouded Yagi 2100-2300 MHz

DESCRIPTION

A Shrouded Yagi antenna for Links in the 2.1-2.3 GHz band. All elements are enclosed in a weather resistant, glassfibre shroud to provide consistent, reliable performance in all weather conditions.

- Former Jaybeam brand product.

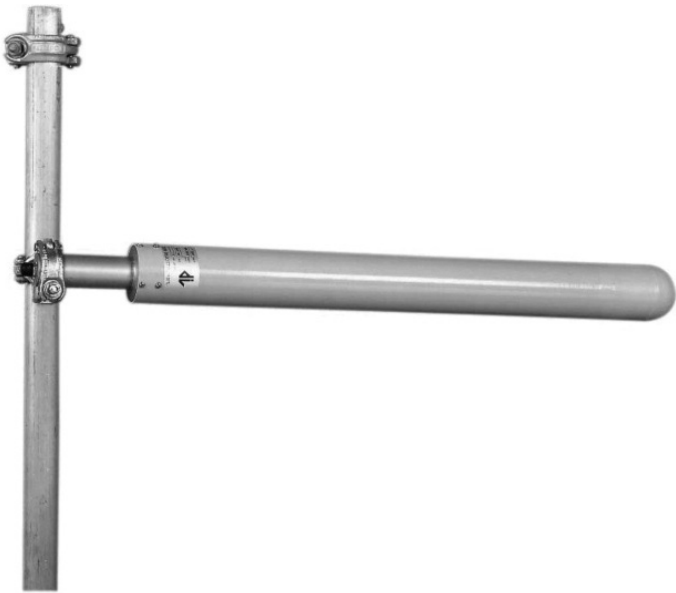
SPECIFICATIONS

Electrical	
Frequency	2100 - 2300 MHz
Max. Input Power	100 W
Polarisation	Linear (Vertical or Horizontal)
3 dB Beamwidth, E-Plane	26 °
3 dB Beamwidth, H-Plane	27 °
Impedance	50 Ω
Gain	14.9 dBd (17 dBi)
VSWR	< 1.3:1 typical, < 1.5:1 max
Front-To-Back Ratio	> 20 dB
Antistatic Protection	All metal parts DC-grounded (Connector shows a DC-short)
In iBwave	Yes

Mechanical	
Connection(s)	N(f)
Materials	Shroud, GRP Radiating assembly, Brass Mounting section 50 mm diameter, Aluminium
Length	1090 mm / 42.91 in.
Wind Load	100 N (160km/h)
Weight	1.6 kg / 3.53 lb
Mounting Bracket	3202078/68 (Ordered Separately)
Alternate Mounting Bracket	0300064/00 + U-bolts to match mounting pipe diameter (Ordered Separately)

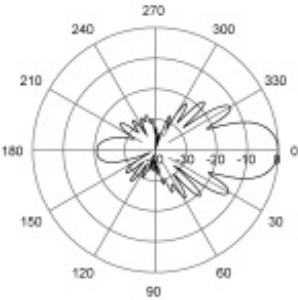
ORDERING

Type	Product No.	Frequency
Shrouded Yagi 2100-2300 MHz	7360010	2100 - 2300 MHz
Cast aluminium cross clamp, circular	0300064/00	
M8 x 50mm (2") U-Bolts (1 Pair)	4884036/00	
M8 x 75mm (3") U-Bolts (1 Pair)	4884076/00	
Fixed norstel / coupler clamp (cross clamp)	3202078/68	



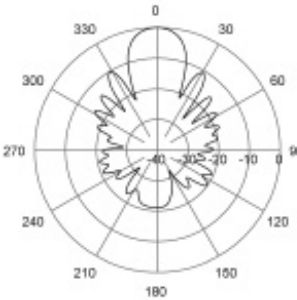
DIAGRAM

RADIATION PATTERNS



E-Plane | 2200 MHz

RADIATION PATTERNS



H-Plane | 2200 MHz