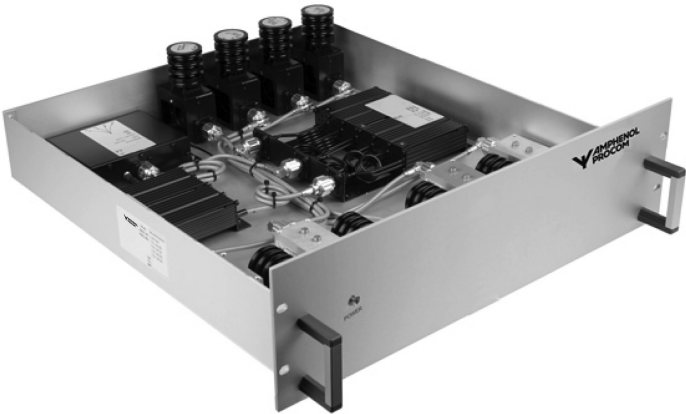


4-Channel 19" 3 HU Single Tray Combining System

DESCRIPTION

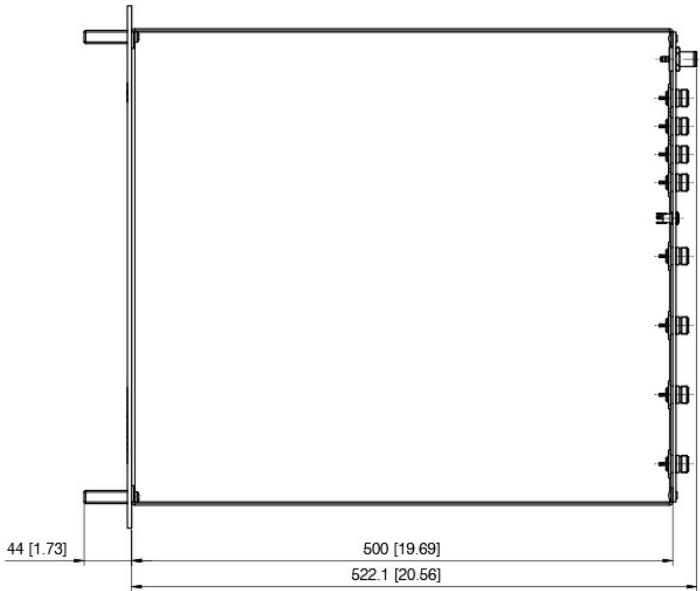
- An integrated single tray combining solution housing a 4-channel hybrid Tx hybrid combiner, duplex filter, active Rx multicouplers and preselector.
- Minimal rack space required - only 3 HU.
- Compatible with digital 6.25 kHz channel spacing.
- Single Tx isolators fitted as standard (dual isolators available as option).
- 4 Rx ports as standard.
- Please specify Tx/Rx frequencies when ordering.



SPECIFICATIONS

Electrical	
Model	PRO-COM450-HDAR-4 ...
Frequency	l : 340 - 400 MHz h : 406 - 470 MHz
Max. Input Power	50 W
Max. Tx-Tx Spacing	2 MHz
Min. Duplex Spacing	5 MHz
Insertion Loss Tx Path	< 8.0 dB
Impedance	50 Ω
Ant-Tx Isolation	> 40 dB @ 25 °C
Isolation Rx-Rx	> 20 dB
Isolation Tx-Tx	> 70 dB
VSWR	< 1.5:1
Current Consumption	500 mA @ 12 VDC
LNA Noise Figure	< 3.5 dB
Gain Rx	1 dB ±1 dB (factory set)
No. of Channels	4
Mechanical	
Connection(s)	N(f)
Dimensions	19" x 3 HU (482.6 x 132.55 mm) / 19 x 5.22 in. - see Mechanical Outline for depth of tray
Weight	Approx. 9.2 kg / 20.28 lb.
Environmental	
Operating Temperature Range	-30 °C to +60 °C

MECHANICAL OUTLINE



All dimensions are given in mm [in.].

CONTACT FOR SYSTEM-SPECIFIC PRODUCT NO.

[illegible]

## ACCESSORIES

POWER SUPPLY AC/DC 12V/1A EU/UK/US



Page: 2 of 2  
Last edited: 2021/09/23