

Two TMO TETRA Mobile-Station and one DMO TETRA Mobile Station

DESCRIPTION

- The PRO-ISO-PHY-TETRA-S-ELW combiner provides the possibility of connecting two TMO and one DMO TETRA radios into one common antenna.
- ETSI and DIN-SPEC 14507-2 compliant connection of two digital radios.
- The PRO-ISO-PHY-TETRA-S-ELW supports Direct Mode Operation (DMO), giving one TETRA mobile radio the ability to communicate in direct mode.
- The PRO-ISO-PHY-TETRA-S-ELW is the successor to the PRO-ISO-PHY-TETRA-ELW.
- The PRO-ISO-PHY-TETRA-S-ELW has improved isolation between the ports - more than 60 dB - and lower insertion loss.
- The use of high-quality system components such as highly selective helical duplex filters and high-performance isolators provides high isolation and secure communication.
- Built-in high-pass filter, for attenuating interference from 150 - 174 MHz and 74 - 87.5 MHz bands.
- The smallest and most compact design on the market.
- Suitable for both stationary and mobile use.
- Also available in tray for 19" rack mounting.
- Vibration and shock tested in accordance with EN-60068**.

**Tested in accordance with:
Random test: EN 60068-2-64, test specification: EN 300 019-2-5 V3.0.0.
Shock test: EN 60068-2-27, test specification: EN 300 019-2-5 V3.0.0.
Bump test: EN 60068-2-29, test specification: EN 300 019-2-5 V3.0.0.



ORDERING

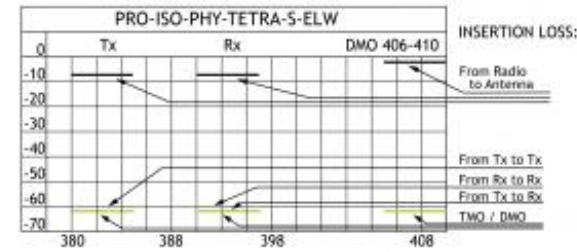
Type	Product No.
PRO-ISO-PHY-TETRA-S-ELW-N(f)	210002226
19" Front plate with connectors in front *	210002300
19" Front plate with connectors in back *	210002301

SPECIFICATIONS

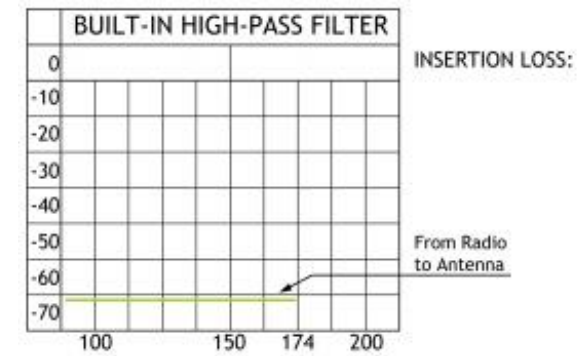
Electrical	
Model	PRO-ISO-PHY-TETRA-S-ELW
Frequency	TX: 380 - 385 MHz RX: 390 - 395 MHz
Type	TETRA combiner
DMO Frequency	406 - 410 MHz
Insertion Loss Tx-Ant.	< 7 dB
Insertion Loss Rx-Ant.	< 7 dB
Insertion Loss DMO-Ant	< 2 dB
Isolation TRx - TRx	TX - TX: > 62 dB (380 - 385 MHz) RX - RX: > 62 dB (390 - 395 MHz) TX - RX / RX - TX: > 62 dB
VSWR	< 1.5:1
Maximum Input Power	25 W / station
Isolation DMO-TMO	> 60 dB
Group Delay Variation	TX-ANT. < 120 nsec. RX-ANT. < 150 nsec.
No. Of Channels	3
Mechanical	
Connection(s)	N(f)
Colour	Black
Dimensions	150 (excl. conn.) x 150 x 35 mm / 5.91 (excl. conn.) x 5.91 x 1.38"
Weight	1.94 kg / 4.28 lb
Environmental	
Ingress Protection	IP62

ADDITIONAL DATA

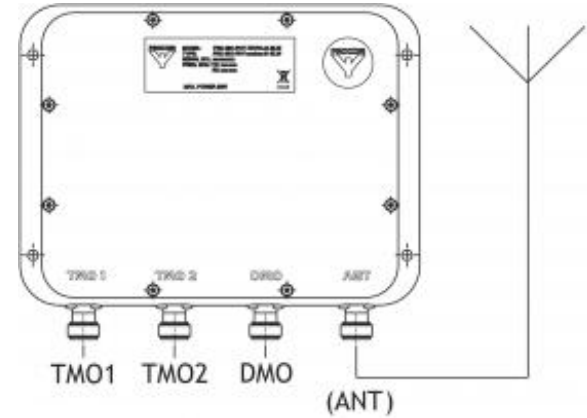
TYPICAL ATTENUATION VALUES



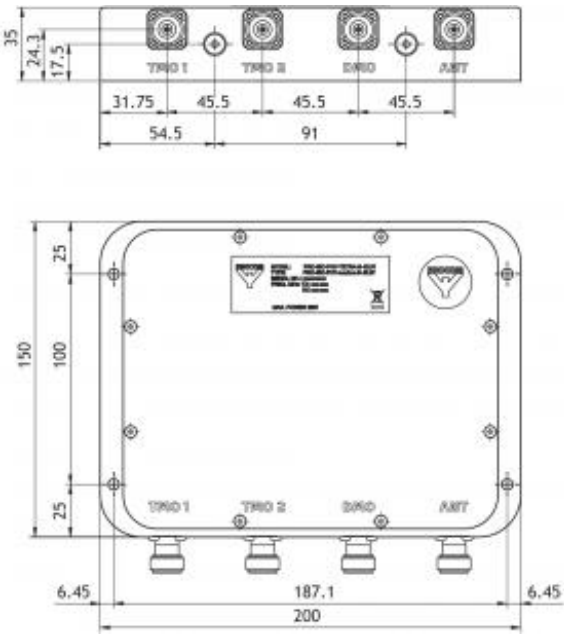
The built-in high-pass filter attenuates large signal interference and harmonic from radiosystems below 174 MHz.



CONNECTION DIAGRAM



MOUNTING DETAILS



19" Front plate with connectors in front (210002300)



19" Front plate with connectors in back (210002301)

