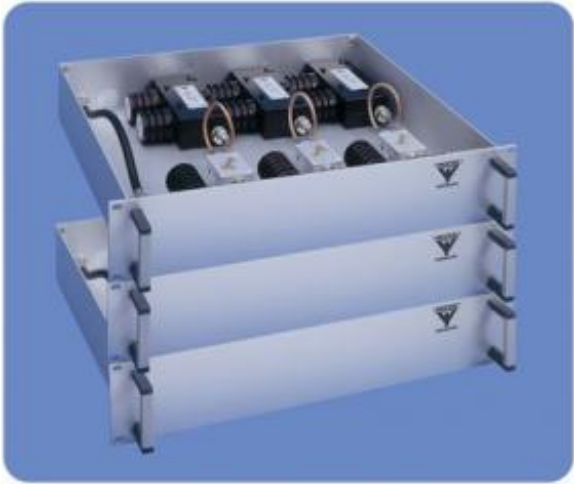


6-Channel Hybrid Combiner for 100 W

DESCRIPTION

- > The PRO-PHY series of hybrid combiners has been designed to help identify the optimum solution for combining several transmitters into one antenna.
- > All hybrid combiners are suitable for 19" rack mounting.
- > Single isolator fitted as standard.
- > Maximum input power of 100 W.
- > Please specify the frequencies for TX when ordering.



ORDERING

Type	Product No.
PRO-PHY450-6SI-100	210001279

SPECIFICATIONS

Electrical	
Model	PRO-PHY450-6SI-100
Frequency	380 - 470 MHz
Tx-Tx Spacing	< 11 MHz
Insertion Loss	8.6 dB
Impedance	50 Ω
Tx-Tx Isolation	> 70 dB
VSWR	< 1.5:1
Maximum Input Power	100 W
No. Of Channels	6
Mechanical	
Connection(s)	N(f)
Dimensions	6HU x 483 x +500 mm (267 x 483 x +500 mm)
Weight	22 kg / 48.50 lb
Environmental	
Operating Temperature Range	-30°C to +60°C

