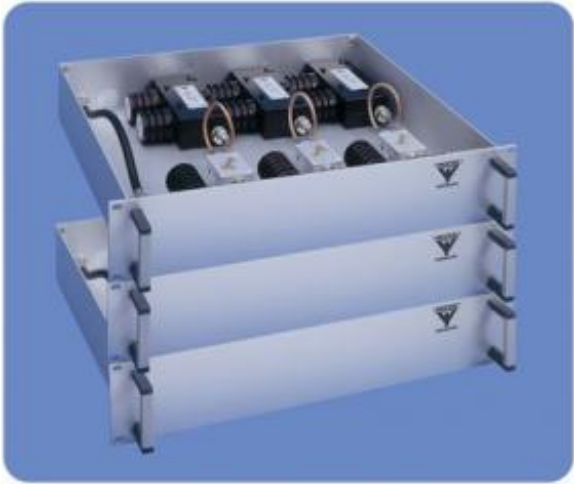


6-Channel Hybrid Combiner for 100 W

DESCRIPTION

- The PRO-PHY series of hybrid combiners has been designed to help identify the optimum solution for combining several transmitters into one antenna.
- All hybrid combiners are suitable for 19" rack mounting.
- Dual isolators fitted as standard.
- Maximum input power of 100 W.
- Please specify the frequencies for TX when ordering.



ORDERING

Type	Product No.
PRO-PHY450-6DI-100	210000901

SPECIFICATIONS

Electrical	
Model	PRO-PHY450-6DI-100
Frequency	380 - 470 MHz
Tx-Tx Spacing	< 11 MHz
Insertion Loss	9.1 dB
Impedance	50 Ω
Tx-Tx Isolation	> 90 dB
VSWR	< 1.5:1
Maximum Input Power	100 W
No. Of Channels	6
Mechanical	
Connection(s)	N(f)
Dimensions	6HU x 483 x +500 mm (267 x 483 x +500 mm) 8HU x 483 x 400 mm (356 x 483 x +500 mm)
Weight	25 kg / 55.12 lb
Environmental	
Operating Temperature Range	-30°C to +60°C

