

GPS mount for GPS Antennas

DESCRIPTION

- GPS-antenna for fixed installations.
- Special mount for roof thickness 3.5-7.5 mm.
- External antenna whip mounted on the GPS-Combi mount.
- Full hemispherical coverage.
- Built-in high gain, low noise amplifier.
- Right-Hand Circular Polarisation (RHCP).
- 5 V supply voltage (3 V respectively 12 V available on request).
- DC supply via RF-connector.
- Tools for mounting included.

Applicable to all GPS-C whip models

□

ORDERING

Type	Product No.
GPS-COMBI MOUNT 3.5-7.5 mm	132000006



SPECIFICATIONS

Electrical	
Model	GPS-COMBI MOUNT 3.5-7.5 mm
Antenna Type	Active patch antenna
Polarisation	Circular
Pattern Type	Hemispherical
Impedance	50 Ω
Gain	28 dBic in axial direction (typ.)
Cross Polar Attenuation	> 10 dB (typ.)
Selectivity	> 45 dB down at +/- 45 MHz
Mechanical	
Connection(s)	FME (male for GPS) + FME (female for mobile antenna)
Max. Roof Thickness	2.5 - 7.5 mm / 0.10 - 0.30 in.
GPS Antenna	
P1dB (GPS Amplifier)	Approx. +7 dBm
Noise Figure (GPS Amplifier)	< 1 dB (typ.)
Gain (GPS Amplifier)	> 30 dB (typ.)
VSWR (GPS Amplifier)	< 2.0:1
Operating Temperature Range (GPS)	-35 to 75 °C
Installation Torque (GPS)	4 ± 0.5 Nm
Frequency (GPS)	1575 MHz
Weight (GPS)	0.114 kg / 0.25 lb
Power Supply (GPS)	5 ± 0.5 VDC (3 V resp. 12 V on request)
Current Consumption (GPS Amplifier)	0.025 mA
Dimensions (GPS)	Approx. 30 x 89 mm
Colour (GPS)	Black
Materials (GPS)	Cu-nite brass, Stainless steel, Reinforced thermoplastic

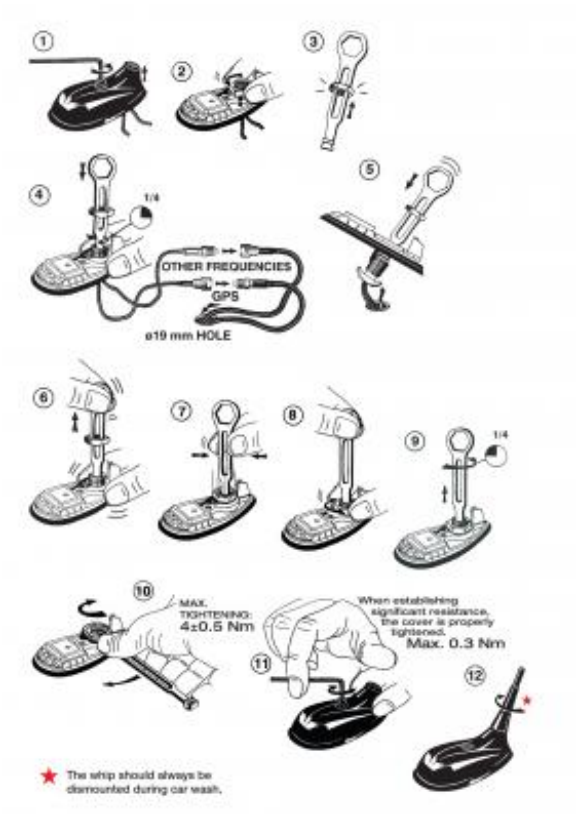
ADDITIONAL DATA

□

TOOLS



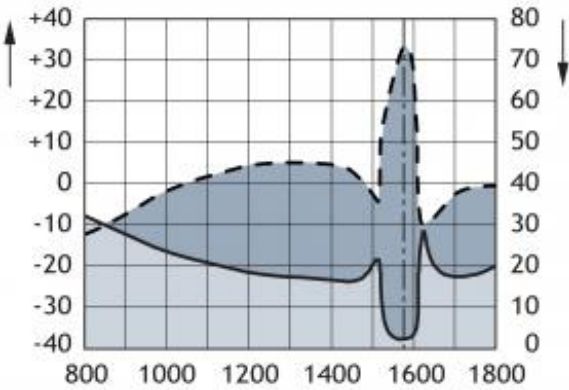
MOUNTING INSTRUCTIONS



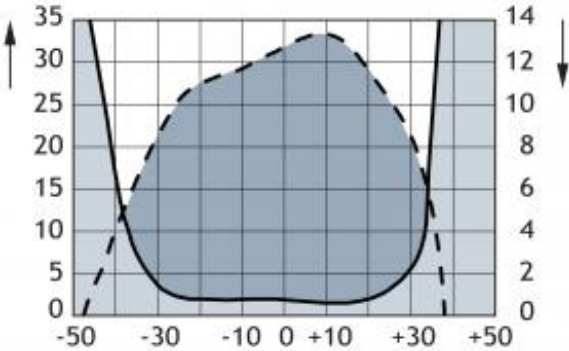
Do not use sealer on rubber gasket or other places.

TYPICAL RESPONSE CURVE

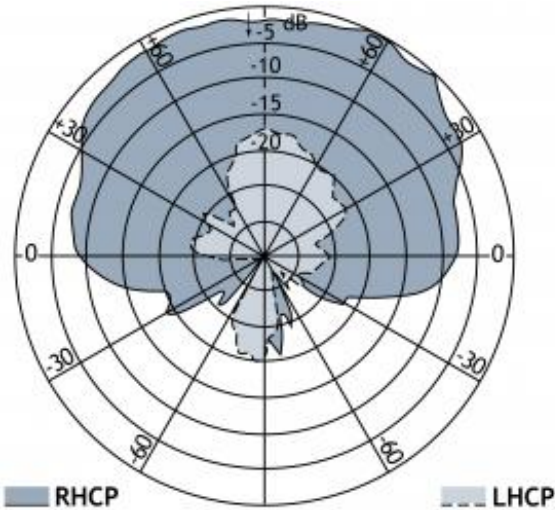
GAIN AND NOISE FIGURE (dB)



GAIN AND NOISE FIGURE AROUND GPS CENTER FREQUENCY (dB)



VERTICAL RADIATION PATTERN



CE PROCOM A/S • Smedetofte 12
DK-3600 Frederikssund • Denmark

