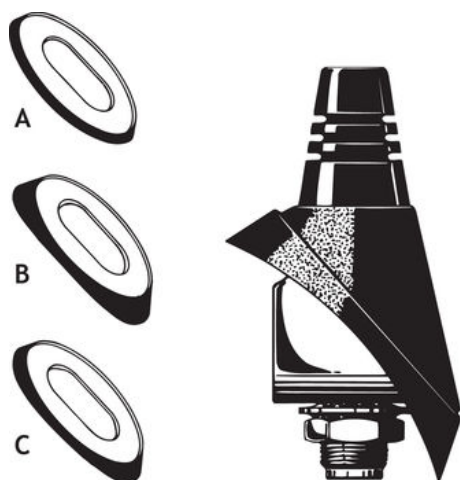


SM-Mount

Mobile Mount for Mounting on the Curved Wings

DESCRIPTION

- High-quality mobile mount for mounting on the curved wings.
- M6 internal thread whip-fastening system.
- Supplied with three different packing gaskets for optimum adjustment to the wing.
- Provided with FME-connection system – cable to be ordered separately.
- Whips available for communications bands within 66 - 1000 MHz.



ORDERING DESIGNATIONS

Order this mount by simply asking for the SM (or SM-mount). Cable is to be ordered separately.

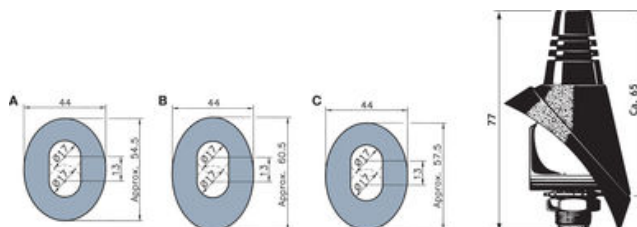
SPECIFICATIONS

MODEL	SM-Mount
APPLICATION	Mount for mobile antennas
FREQUENCY	66 - 1000 MHz
CONNECTION TO WHIP	M6 internal thread
MATERIALS	Stainless steel Cu-nite brass Environment-proof plastics
COLOUR	Black
HEIGHT	Approx. 50 mm
INSTALLATION DIAMETER	45 x 55 mm (elliptic)
BUILD-IN DEPTH	Approx. 40 mm
RECOMMENDED INSTALLATION TORQUE	6.5 ± 0.5 Nm
WEIGHT	80 g
MOUNTING	17 x 30 mm oval hole

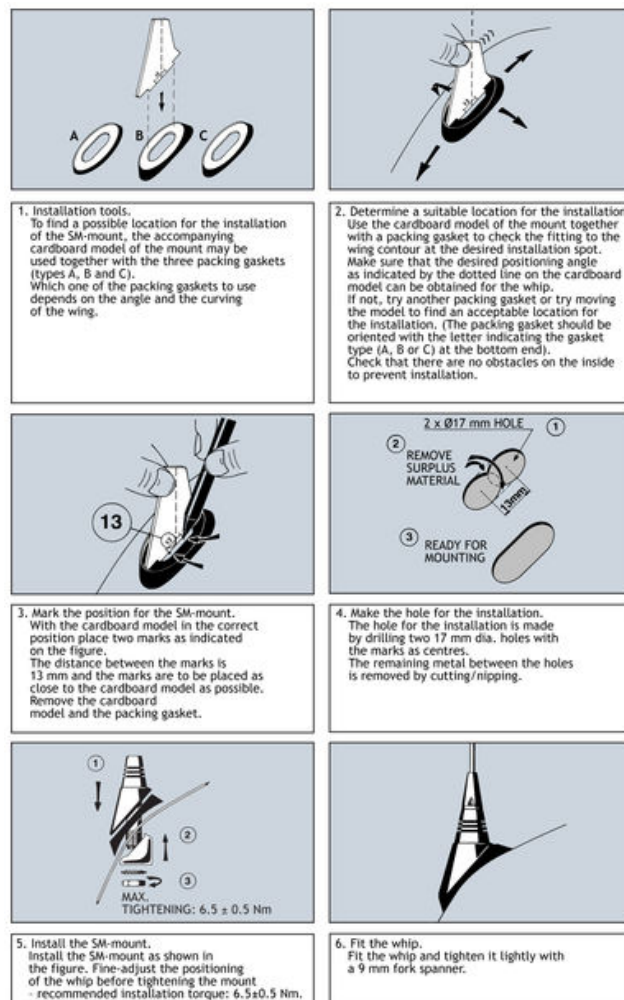
INSTALLATION

The SM-mount is especially designed for mounting on curved surfaces, e.g. the curved wings. The mount is supplied with three different packing gaskets to ensure the best possible adjustment to the wing contour at the desired locations of the installation. Please refer to the installation steps described below. A good contact surface on the inside of the car body must always be ensured, thus enabling the base plate to get in direct contact with the metal parts of the car, which is of utmost importance for proper performance of the antenna. When cleaning the car in car-washing machines, the whip should be removed. After wash, the whip is refitted and tightened lightly.

1. INSTALLATION DIMENSIONS



2. INSTALLATION STEPS



PROCOM A/S reserve the right to amend specifications without prior notice.

16/01/2009

