

Colinear 3 dB Mobile Antenna for the1800 MHz Band

DESCRIPTION

- Mobile antenna for the 1800 MHz cellular systems (DCS-1800/PCN).
- Colinear, stainless steel whip.
- 3 dB gain compared to a ¼ λ whip.
- Stainless steel LX-mount – professional quality in elegant and smooth design.
- Especially suited for roof-mounting.
- Provided with FME-connection (supplied without cable).
- Bendable section in mount for adjustment of whip (tiltable 15° by hand).
- Installation with access from the outside only (requiring an 18 mm dia. hole).



ORDERING

| Type | Product No. |
|------------|-------------|
| MU 1804-LX | 130001269 |

SPECIFICATIONS

| Electrical | |
|---------------------|---|
| Model | MU 1804-LX |
| Frequency | 1800 MHz band (1700 - 1900 MHz) |
| Antenna Type | Collinear mobile antenna |
| Polarisation | Vertical |
| Impedance | 50 Ω |
| Maximum Input Power | 25 W |
| Gain (EIA RS-329-1) | 3 dB |
| Mechanical | |
| Materials | Whip: Black-chromed brass Black-chromed stainless steel Mount: Stainless steel Cu-nite brass Environment-proof plastics |
| Cable | FME-cable to be ordered separately |
| Installation Torque | 3.5 Nm max. |
| Colour | Black |
| Height | 170 mm / 6.69 in. |
| Weight | 0.034 kg / 0.07 lb |
| Mounting | 18 mm dia. hole |

ADDITIONAL DATA

INSTALLATION

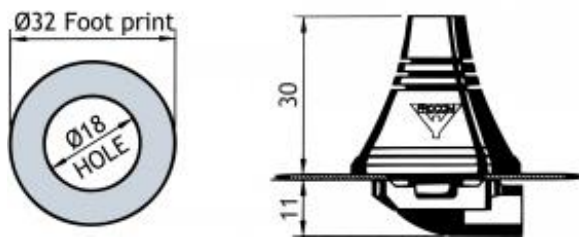
The LX-mount is especially suited for roof-mounting. It is recommended to mount the antenna at the centre of the roof to ensure the best omnidirectional coverage. Mounting can take place in an 18 mm dia. hole with access from the outside only.

When cleaning the car in car-washing machines, the whip should be removed – a 9 mm fork spanner can be used. After wash, the whip is refitted and tightened lightly with the spanner.

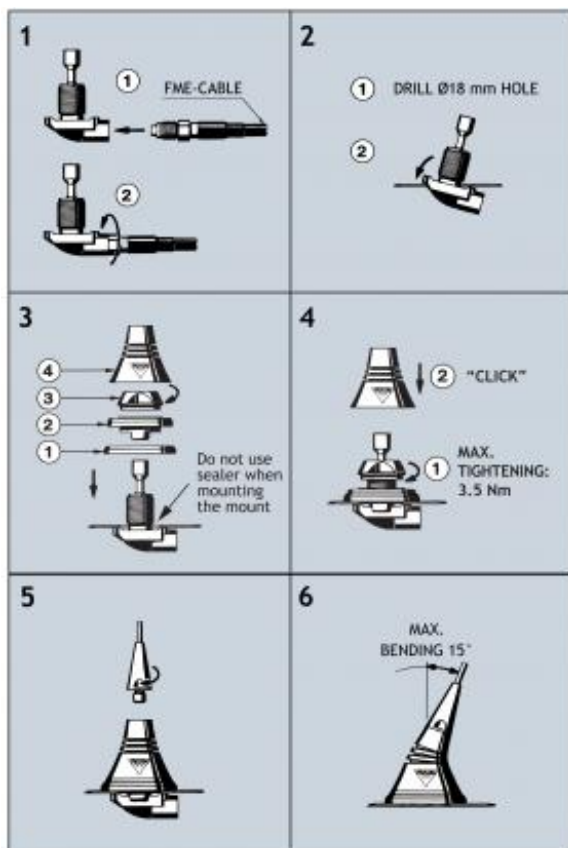
The mount is equipped with a bendable section ($\pm 15^\circ$) to make it possible to adjust the antenna to an upright position.

1. INSTALLATION DIMENSIONS

LX-MOUNT



2. INSTALLATION STEPS



PLEASE NOTE

When tightening the revolving nut (see picture 4), special care must be taken to keep the spanner in the correct position.

3. TUNING

The antenna is delivered factory-tuned and requires no further tuning.

