

Indoor Right Hand Circular Polarized Antenna for the 160 Mhz Band

DESCRIPTION

- Low profile antenna for the 160 MHz band.
- XCPI 160/RHCP is a Right Hand Circularly Polarized antenna for indoor use e.g. ceilings and walls inside ships and houses.
- Circularly polarization is chosen to avoid out-of-phase signals.
- Reduces flutter considerably.
- Specially designed for closed rooms.
- Covers 144 - 175 MHz with a radiation of approx. 2 dBic.
- The antenna is carefully sealed with a discreet cover.
- The connector is placed at one side to enable mounting close to a wall or a ceiling.

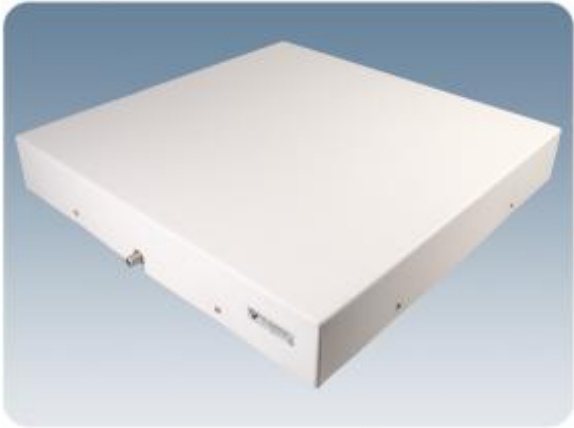
SPECIFICATIONS

Electrical	
Model	XCPI 160/RHCP
Frequency	144 - 175 MHz
Antenna Type	Right hand circularly polarized antenna
3 dB Beamwidth, H-Plane	60 °
Polarisation	Circular
3 dB Beamwidth, E-Plane	60 °
Impedance	50 Ω
Gain	2 dBic (0 dBd)
Maximum Input Power	50 W
In iBwave	Yes

Mechanical	
Connection(s)	N(f)
Materials	Cover: PS (white) Chassis: Stainless steel
Colour	Marine white
Dimensions	Approx. 608 x 608 x 90 mm
Weight	5.5 kg / 12.13 lb
Mounting	5.5 mm dia (4 holes) For optimum performance a groundplane of 1 x 1 m is required

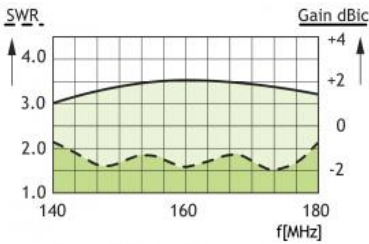
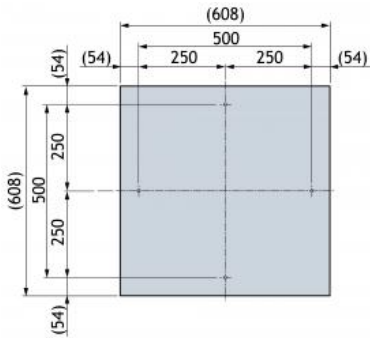
Environmental	
Operating Temperature Range	-30 °C to +75 °C

ORDERING	
Type	Product No.
XCPI 160/RHCP	100000154



DIAGRAM

MOUNTING DETAILS (Dimensions excl. cover)TYPICAL GAIN AND SWR CURVES

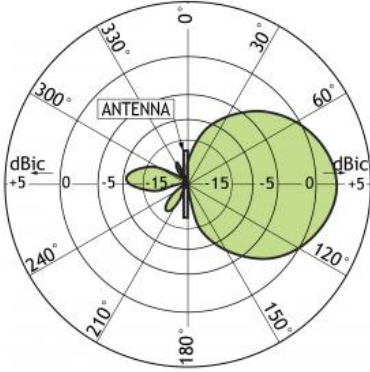


TYPICAL RADIATION PATTERN (E-PLANE)



This curve shows the radiation patterns in the vertical plane.

TYPICAL RADIATION PATTERN (H-PLANE)



This curve shows the radiation patterns in the horizontal plane (horizontal coverage).