

GPS Antenna with Whip with Shock Spring for the 160 MHz, 450 MHz and FM Bands

DESCRIPTION

- External antenna whip mounted on the GPS-Combi mount.
- GPS-antenna for fixed installations.
- Black-chromed, conical stainless steel whip.
- Sturdy, general-purpose $\frac{1}{4} \lambda$ antenna in professional quality.
- Easily removable whip for car wash.
- Full hemispherical coverage.
- Built-in high gain, low noise amplifier.
- Right-Hand Circularly Polarized antenna (RHCP).
- 5 V supply voltage (3 V respectively 12 V available on request).
- DC supply via RF-connector.



ORDERING

Type	Product No.
GPS-C 2R/70/FM	132000061
LH 108/136-2G (optional)	200000762
DIPX 225/330-FME (optional)	200000670

SPECIFICATIONS

Electrical	
Model	GPS-C 2R/70/FM
Frequency	2 m: 145 MHz 70 cm: 435 MHz FM band: 88-108 MHz
Antenna Type	Mobile antenna
Polarisation	Vertical
Impedance	50 Ω
VSWR	< 1.3:1 @ F(res)
Maximum Input Power	25 W
Bandwidth	2 m: 20 MHz 70 cm: 40 MHz @ SWR = 2.0

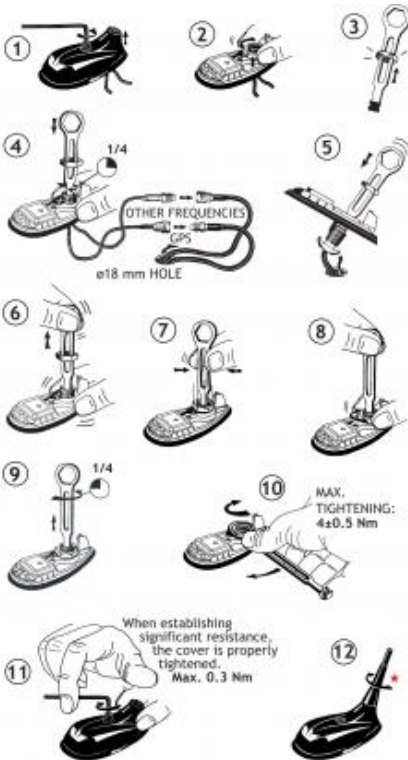
Mechanical	
Connection(s)	FME (male for GPS) + FME (female for mobile antenna)
Materials	Whip: Black-chromed, conical stainless steel Black-chromed brass Mount: Weather- and shockproof plastics Black-chromed brass
Colour	Black
Height	492 mm / 19.37 in.
Max. Roof Thickness	2.5 mm / 0.10 in.
Weight	0.05 kg / 0.11 lb
Mounting	ø18.0 mm dia. hole for roof thickness up to 2.0 mm ø18.5 mm dia. hole for roof thickness 2.0 - 2.5 mm Tools for mounting included

GPS Antenna	
P1dB (GPS Amplifier)	Approx. +7 dBm
Gain (GPS)	28 dBic in axial direction (typ.)
Antenna Type (GPS)	Active patch antenna
Noise Figure (GPS Amplifier)	< 1 dB (typ.)
Cross Polar Discrimination (GPS)	> 10 dB (typ.)
Gain (GPS Amplifier)	> 30 dB (typ.)
VSWR (GPS Amplifier)	< 2.0:1
Selectivity (GPS)	> 45 dB down @ +/- 45 MHz
Frequency (GPS)	1575 MHz
Weight (GPS)	0.114 kg / 0.25 lb
Power Supply (GPS)	5 \pm 0.5 VDC (3 V resp. 12 V on request)
Current Consumption (GPS Amplifier)	0.025 mA
Dimensions (GPS)	Approx. 30 x 89 mm
Colour (GPS)	Black
Polarisation (GPS)	RHCP
Impedance (GPS)	50 Ω
Materials (GPS)	Cu-nite brass, Stainless steel, Reinforced thermoplastic

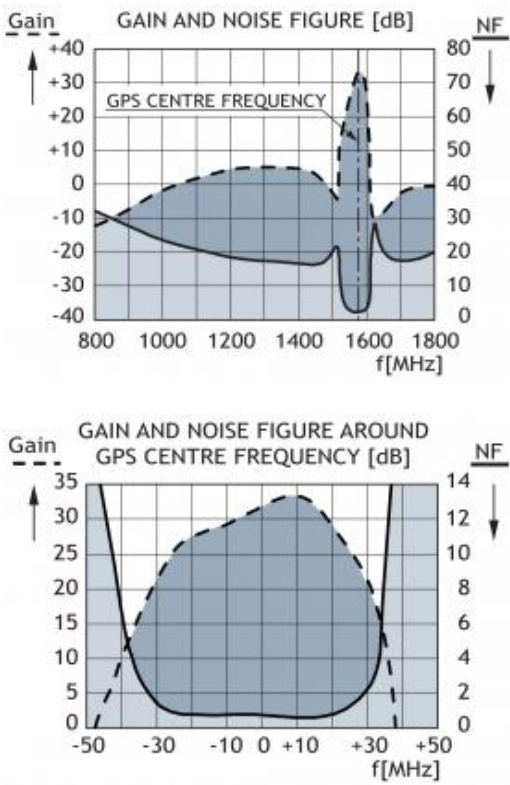
ADDITIONAL DATA



MOUNTING INSTRUCTIONS



TYPICAL RESPONSE CURVES



Do not use sealer on rubber gasket or other places.

CABLE MOUNTING

VERTICAL RADIATION PATTERN

