

## GPS Antenna with a $\frac{1}{4} \lambda$ Whip with Shock Spring for the 160 MHz, EGSM and FM Bands

### DESCRIPTION

- External antenna whip mounted on the GPS-Combi mount.
- GPS-antenna for fixed installations.
- Black-chromed, conical stainless steel whip.
- Easily removable whip for car wash.
- Full hemispherical coverage.
- Built-in high gain, low noise amplifier.
- Right-Hand Circularly Polarized antenna (RHCP).
- 5 V supply voltage (3 V respectively 12 V available on request).
- DC supply via RF-connector.
- Sturdy, general-purpose  $\frac{1}{4} \lambda$  antenna in professional quality.



### ORDERING

Type	Product No.
GPS-C 2R/GSM/FM/...	132000063
TRI 2/900-1800-UMTS/FM (optional)	200000792

### SPECIFICATIONS

Electrical	
Model	GPS-C 2R/GSM/FM/...
Frequency	Tunable by cutting within: 144 - 175 MHz also receives. EGSM (790 - 960 MHz) and FM-radio (88 - 108 MHz)
Antenna Type	Mobile antenna
Polarisation	Vertical
Pattern Type	Hemispherical
Impedance	50 $\Omega$
Maximum Input Power	25 W
Gain (EIA RS-329-1)	Approx. 0dB (acc. to EIA RS-329-1) for the 160 MHz band

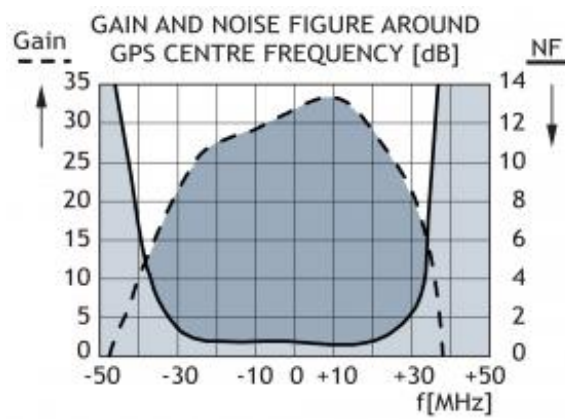
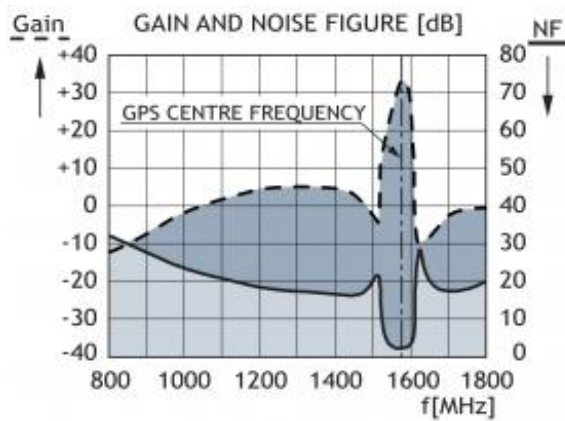
Mechanical	
Connection(s)	FME (male for GPS) + FME (female for mobile antenna)
Materials	Whip: Black-chromed, conical stainless steel Black-chromed brass Mount: Weather- and shockproof plastics Black-chromed brass
Colour	Black
Height	450 mm / 17.72 in.
Max. Roof Thickness	2.5 mm / 0.10 in.
Weight	0.06 kg / 0.13 lb
Mounting	$\varnothing$ 18.0 mm dia. hole for roof thickness up to 2.0 mm $\varnothing$ 18.5 mm dia. hole for roof thickness 2.0 - 2.5 mm Tools for mounting included

GPS Antenna	
P1dB (GPS Amplifier)	Approx. +7 dBm
Gain (GPS)	28 dBic in axial direction (typ.)
Antenna Type (GPS)	Active patch antenna
Noise Figure (GPS Amplifier)	< 1 dB (typ.)
Cross Polar Discrimination (GPS)	> 10 dB (typ.)
Gain (GPS Amplifier)	> 30 dB (typ.)
VSWR (GPS Amplifier)	< 2.0:1
Operating Temperature Range (GPS)	-35 to 75 °C
Selectivity (GPS)	> 45 dB down @ +/- 45 MHz
Installation Torque (GPS)	4 $\pm$ 0.5 Nm
Frequency (GPS)	1575 MHz
Weight (GPS)	0.114 kg / 0.25 lb
Power Supply (GPS)	5 $\pm$ 0.5 VDC (3 V resp. 12 V on request)
Dimensions (GPS)	Approx. 30 x 89 mm
Colour (GPS)	Black
Polarisation (GPS)	RHCP
Impedance (GPS)	50 $\Omega$
Materials (GPS)	Cu-nite brass, Stainless steel, Reinforced thermoplastic

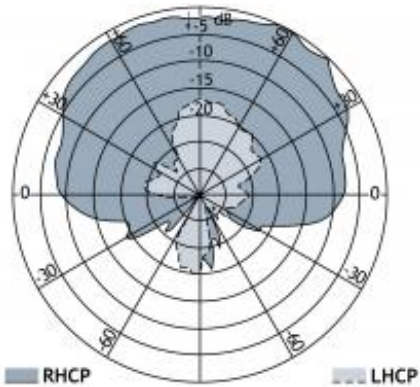
ADDITIONAL DATA



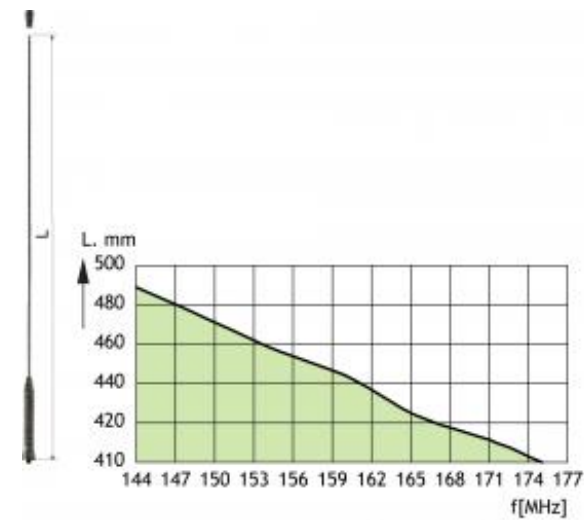
TYPICAL RESPONSE CURVES



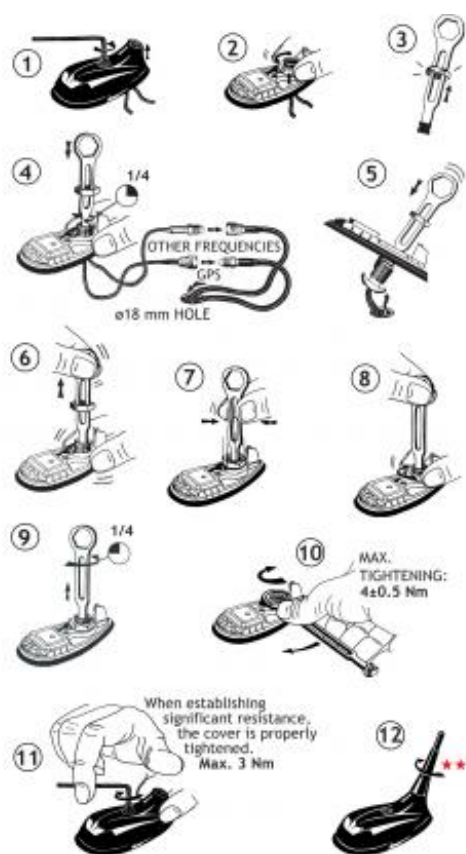
VERTICAL RADIATION PATTERN



TUNING



MOUNTING INSTRUCTIONS



★★ The whip should always be dismantled during car wash.

## CABLE MOUNTING

