

MULTI-BAND CB-RADIO



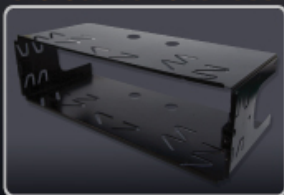
Front Speaker with Tone and Compander Installed

Why should we endure the mumbled audio sound generated from the bottom sides of the conventional CB transceivers? The front installed speaker delivers you better and clearer audio sound. You could take your partners to where there is no traffic congestion by tone and compander selection, which is amazing.

The new Citizen Band(CB) Radio from TTI sets remarkable new standards in the industry with its SMT and the most updated technology in terms of design, features and performances.

TCB-1100, TTI's flagship model, has new design concept with Front Speaker, Full DIN-Size, CTCSS, VOX, and many other amazing features. You can experience many operations that have never been tried in any CB radio before such as changeable backlighting color, tone selection, compander selection, frequency readouts and etc.,

DIN PLATE INCLUDED



TCB-1100

TCB-1100

GENERAL SPECIFICATIONS

• Channel	40(See the frequency band chart)
• Frequency Range	26.965 MHz ~ 27.405 MHz
• Operating mode	F3E (FM), A3E (AM)
• Frequency Control	PLL Synthesizer
• Frequency Tolerance	0.002%
• Operating Temperature Range	-10 to + 55 °C
• Microphone	Plug-in Type
• Input Voltage	13.2V
• Size	165 (W) * 190 (L) * 58(H)
• Weight	990g
• Antenna Connector	SO-239 type

TRANSMITTER SPECIFICATIONS

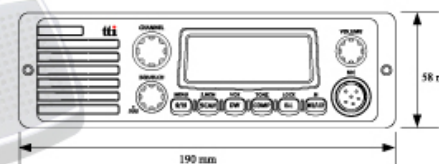
Power output	Duty cycle 10% 4 Watts @ 13.8V DC
Modulation	AM: from 85% to 95% FM: 1.8KHz ± 0.2KHz
Frequency Response	300Hz to 3000Hz
Output Impedance	50ohms, Unbalanced
Harmonic Suppression	Less than -36dBm
Current Drain	AM Full Mod. 1.6A Max.

RECEIVER SPECIFICATIONS

Receiving system	Dual conversion superheterodyne
IF Frequencies	Double Conversion 1st 10.695MHz 2nd 455KHz
Sensitivity	0.7µV for 10dB(S+N)/N in AM Mode 0.5µV for 20dB SINAD in FM Mode
Audio Output Power @10% THD	2.0W @ 8 Ohm
Audio Distortion	Less than 8% @ 1KHz
Image rejection	48 dBm
Adjacent Channel Rejection	60 dBm
Conducted Spurious	Less than -57dBm
Frequency Response	300 to 2500Hz
Built-in Speaker	8 ohms, round
Squelch	Adjustable: Threshold less than 1 microvolt

FEATURE

- 4W or 10W Version
- Din Plate Included
- Multiple Bands
- Frequency readouts
- AM/FM Operation
- Menu Mode (Beep Tone On/Off, TOT, Backlight Dimmer)
- Emergency Channel (9/19)
- Memory
- Last Channel Recall
- Scan & Scan Memory
- Remote Channel Up/Down
- External Speaker Connection
- External S-Meter Connection
- Channel Up&Down
- DSS (Dynamic Squelch System)
- Dual Watch
- VOX
- Tone Selection
- Compander Circuit Selection
- 3 Color Backlighting
- Speaker Mute



* Specification is subject to change without prior notice.

TTI House, 1163-4, Geopo-dong, Kangnam-ku, Seoul, Korea, ©135-240
TEL : +82-2-517-0043 FAX : +82-2-518-2419 www.tti-korea.co.kr

