

KENWOOD

Listen to the Future



KGS-3

FleetSync® AVL &
Dispatch Messaging Software

NEXEDGE®

5-tone

FleetSync®
by KENWOOD

General

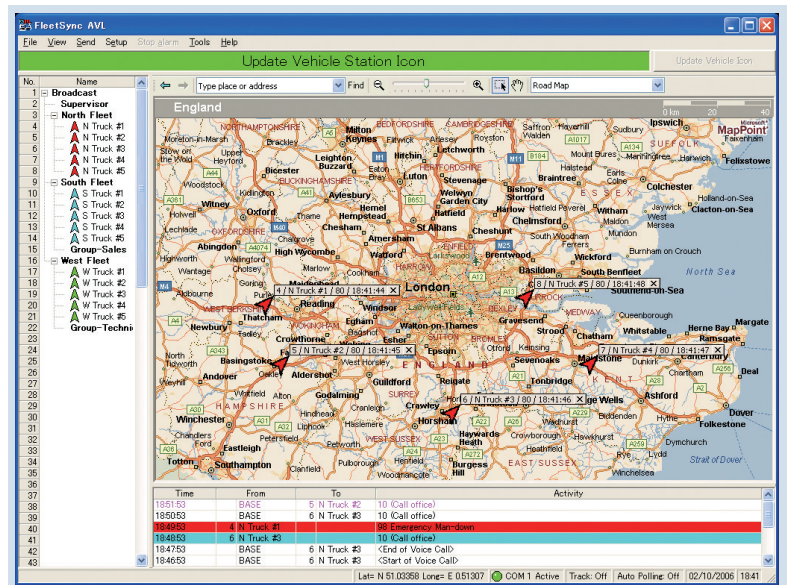
- 5-tone / FleetSync® GPS AVL Data Compatible, ready to interface with Kenwood's Digital NEXEDGE protocol
- 100 Vehicle Tracking Capacity*¹
- Customers' own .Raster format maps (JPEG, BMP etc.) or Microsoft® MapPoint® 2004 or 2006 Mapping (purchase separately)*²
- Multi Language Menu*³
(English, French, German, Italian, Spanish)

Windows® OS Graphical Interface

- 20 Coloured Vehicle Icons
- 30 Status Icons & Emergency Icon
- Screen View & Navigation Functions
- Quick Access
- Vehicle Station Tree View List
- Vehicle Icon Tags (name, unit, status, GPS status, time)
- Activity History Grid with Colour-Coded Call Indications
- Emergency Screen Alerts
- Selected Vehicles can be Viewed or Tracked

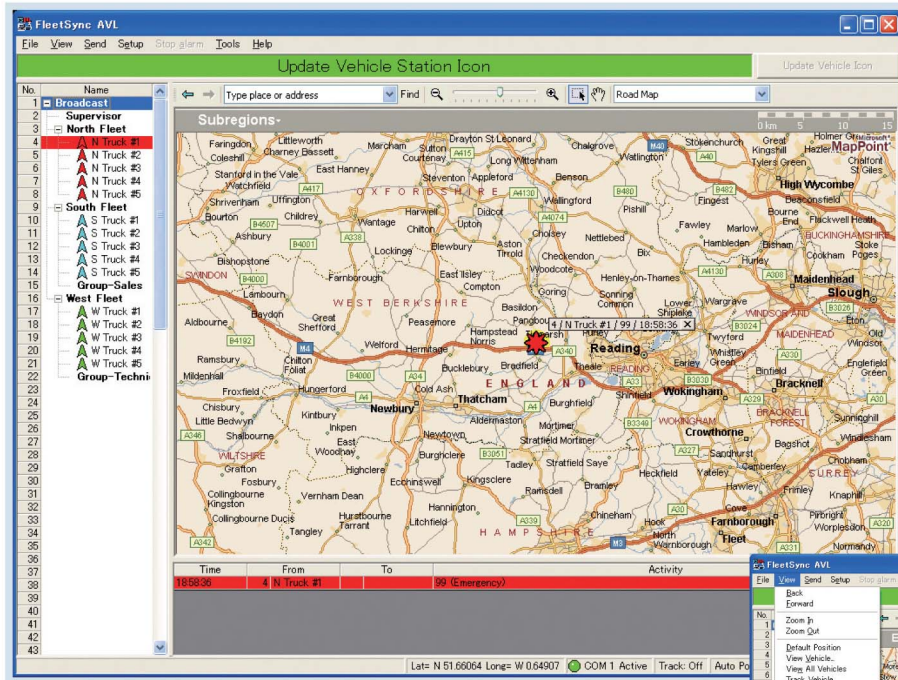
Administrative Features

- Administrator Setup Password Protected
- Auto Polling (base to mobiles)
- Auto Reporting per-Mobile Programming / OAP
- Historical Logging & File Playback
(position, voice, message, status, geofence warning)
- Emergency & Man-Down Log File Review
- WAV File Import for Emergency and New Messages
- Default Position
- Geofence - Alert System for Area Management
- Log Data Database

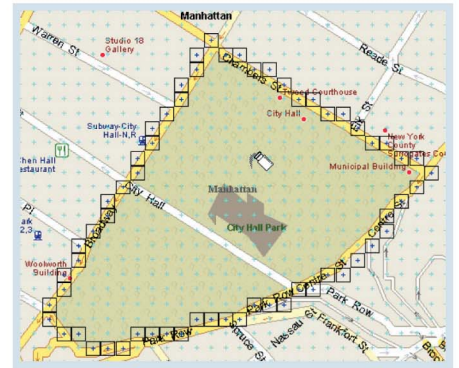


5-tone / FleetSync® Dispatch Signalling & Messaging

- Call Activity Window
- Call Types: Individual, Group, Broadcast (5-tone) / Individual, Fleet, Group, Broadcast, Supervisor (FleetSync®)
- 86 (5-tone) / 70 (FleetSync®) Custom Status Messages (25 alphanumeric ea.)
- Emergency
- Stun / Remote Kill
- Horn Alert
- Free Form Alphanumeric Text Messages (48 Characters up to 720 Characters) *⁴
- 20 Pre-defined 48-Character Alphanumeric Text Messages
- Long Data Message (Max. 4,096 alphanumeric)
- Status Request



• Geofence Setup Screen

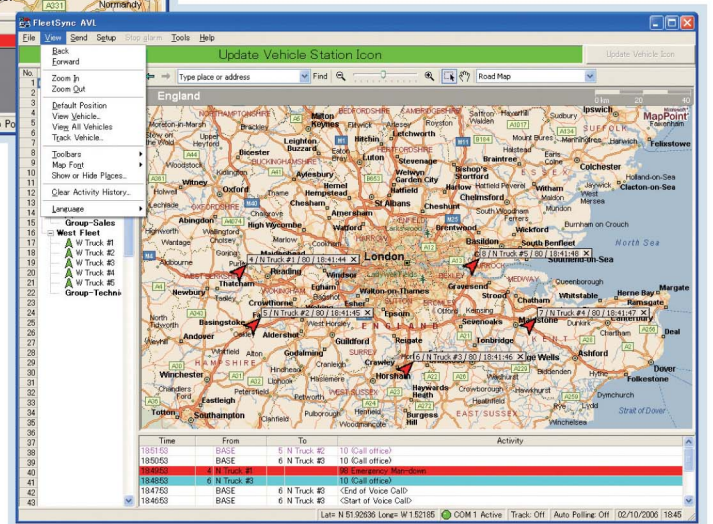


Compatibility

- NX-700/800 & TK-x180-Series Mobiles Configured as Base Station
- Mobile Targets: NX-700 / 800, NX-200 / 300 & TK-X180 / TK-X160 / TK-x80-Series Mobiles with NMEA GPS Unit Installed for FleetSync® AVL
- Portable Targets: KMC-38GPS Speaker Microphone Compatible Models*⁴
- Conventional Operation Only

Minimum Hardware / Software Requirements

- Customers' own maps in JPEG, BMP format or Microsoft® MapPoint® 2004/2006*² Software (purchase separately)
- TK-x180-Series Mobile Base Station (for computer running FleetSync® AVL application)*⁶
- TK-x180-Series Mobile Serial Interface Cable (purchase separately)
- Base Computer: Pentium III 1GHz, 256MB, 60MB HDD, CD/DVD ROM*⁷ Drive, Serial Port, XGA (1024 x 768); Microsoft® Windows® 2000 Professional (SP4 or later); XP Professional (SP2 or later)



- *1 100 Vehicle Tracking: Practical fleet size may vary depending on system type, system loading, vehicle poll/report rates, mixed voice/data or dedicated data channel usage.
- *2 Microsoft® & MapPoint® are registered trademarks of Microsoft Corporation U.S.A.
- *3 Language selected in FleetSync® AVL only applies to FleetSync® AVL and does not apply to the MapPoint® language. The language in the MapPoint® is determined by the language of installed MapPoint®.
- *4 Via NEXEDGE Digital systems message lengths are 100 to 1500 characters. Maximum number of characters will depend on the radio model. Longer messages will use multiple stacks to send all characters
- *5 Refer to KMC-38GPS user manuals for compatible models.
- *6 Supports single base station operation only. KGS-3 does not support single or multi-operator positions via IP-networks.
- *7 Depending on the type of supplied media of the Microsoft® MapPoint®, a DVD-ROM drive may be required.

Kenwood follows a policy of continuous advancement in development. For this reason specifications may be changed without notice. FleetSync® is a registered trademark of Kenwood Corporation.

Windows® is a registered trademark of Microsoft Corporation in the United States and other countries.

Listen to the Future

Kenwood has always connected with people through sound. Now we want to expand the world of sound in ways that only Kenwood can, listening to our customers and to the pulse of the coming age as we head toward a future of shared discovery, inspiration and enjoyment.

Kenwood Electronics UK Limited

Kenwood House, Dwight Road, Watford, Herts, WD18 9EB, United Kingdom

www.kenwood-electronics.co.uk



COMKGS3CATWEB1