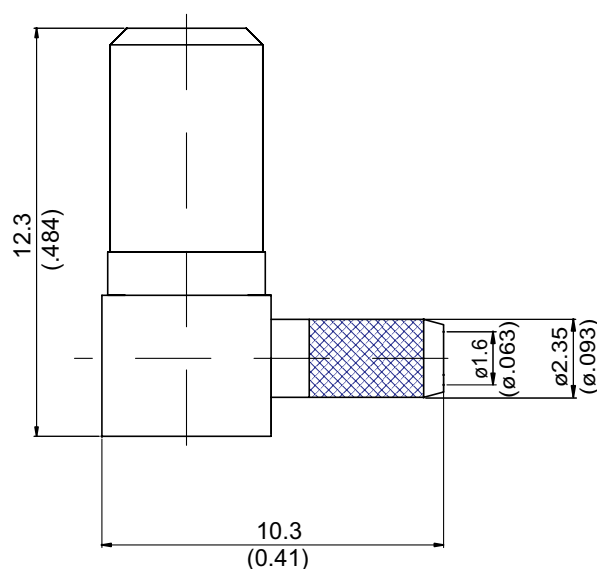


SSMB3100-9316

SSMB Plug Crimp Right Angle

50Ω



| Parts | Material | Plating(Micro-inch) |
|--------------|------------------|---------------------------------------|
| Ferrule | Brass | Gold 5 Over Nickel 50 Over Copper 50 |
| Cover | Brass | Gold 5 Over Nickel 50 Over Copper 50 |
| Coupling Nut | Brass | Gold 5 Over Nickel 50 Over Copper 50 |
| Renber Ring | Beryllium Copper | Gold 5 Over Nickel 50 Over Copper 50 |
| Contact Pin | Beryllium Copper | Gold 20 Over Nickel 50 Over Copper 50 |
| Insulator | Teflon | |
| Body | Brass | Gold 5 Over Nickel 50 Over Copper 50 |

Weight: 1.82 g

Suitable Cables: RG174, RG188, RG316, RG316-E, RG316-FEP

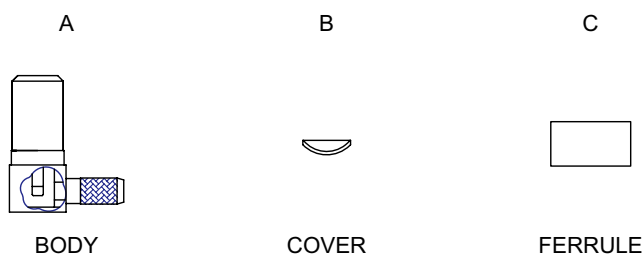
This Part number complies with RoHS.

Notice: JYEBAO reserves the right to make modifications deemed appropriate.

CABLE ASSEMBLY INSTRUCTION

SSMB3100-9316

JYE BAO CO., LTD.



| DIAGRAM | ASSEMBLY INSTRUCTION |
|---------|---|
| | <p>Step 1: STRIP AS SHOWN .</p> |
| | <p>Step 2: SLIDE FERRULE " C " OVER CABLE . Step 3: WRAP THE BRAIDING UPWARDS. Step 4: SLIDE CENTER CONDUCTOR ON THE CONTACT PIN OF CONNECTOR " A " AND SOLDER IN "Y"</p> |
| | <p>Step 5: SLIDE FERRULE " C " TOWARDS THE CONNECTOR " A " AND CRIMP .</p> |
| | <p>Step 6: PRESS ON THE TOP OF " B " WITH JIGS .</p> |

This part number complies with RoHS.

Notice: JYEBAO reserves the right to make modifications deemed appropriate.