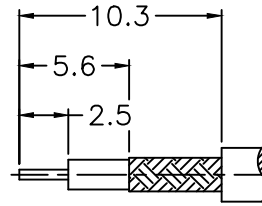
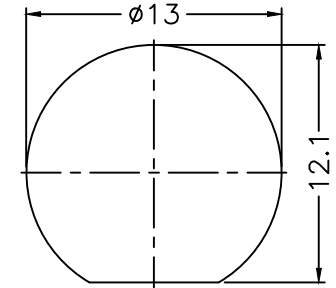


REVISIONS

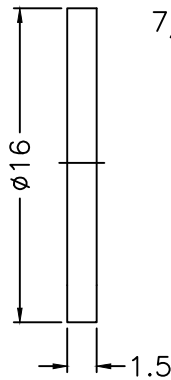
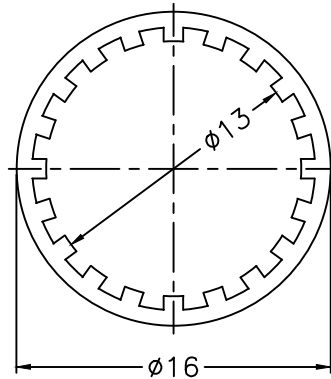
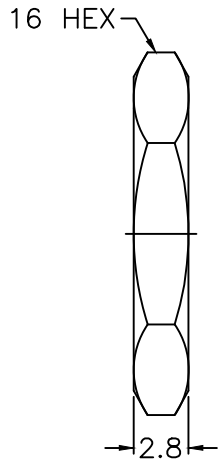
| ISS | ZONE | DESCRIPTION\PER REQUEST\DATE |
|-----|------|------------------------------|
| | | |



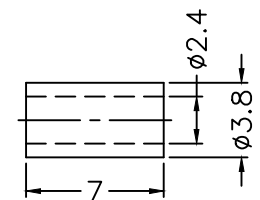
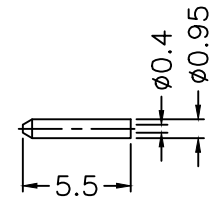
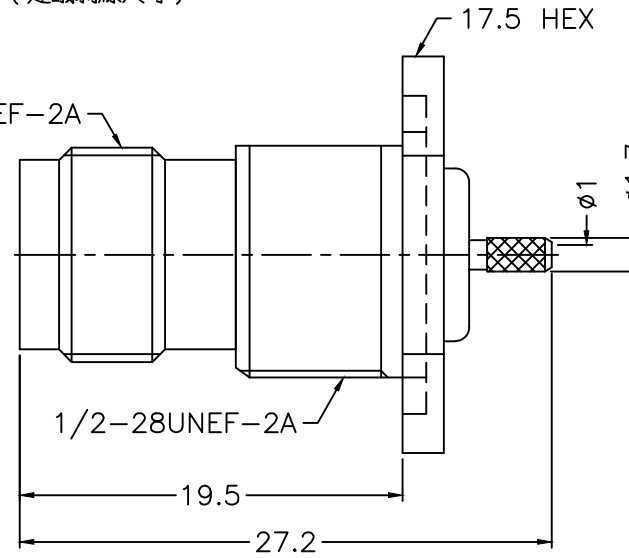
RECOMMENDED
CABLE STRIPPING DIM'S
(建議剝線尺寸)



RECOMMENDED
MOUNTING HOLE
(建議架設孔)



7/16-28UNEF-2A



NOTES: FINISH (PLATING THICKNESS IN MICRO-INCHES)

1. BRASS
2. NICKEL PL. 100 MIN. THICK OVER COPPER PL. 50 MIN. THICK
3. PHOSPHOR BRONZE
4. GOLD PL. 3 MIN. THICK OVER NICKEL PL. 50 MIN. THICK OVER COPPER PL. 50 MIN. THICK
5. TEFLON

1. CRIMPED FERRULE
HEX CRIMP SIZE .128"
2. CRIMPED CONTACT PIN
SQ. CRIMP SIZE 0.7(mm)
3. MAX. PANEL THICKNESS=5mm

RoHS COMPLIANT

| 10 | FERRULE | COPPER | NOTE 2 | 1 | FR-24-38-70C |
|-----|-------------|----------|---------|------|--------------------|
| 9 | CONTACT PIN | NOTE 1 | NOTE 4 | 1 | PIN-04-095-55 |
| 8 | HEX NUT | NOTE 1 | NOTE 2 | 1 | HN-16-1228-28 |
| 7 | LOCK WASHER | NOTE 1 | NOTE 2 | 1 | LW-13-16-05 |
| 6 | GASKET | RUBBER | RED | 1 | GS-122-160-15 |
| 5 | BARREL | NOTE 1 | NOTE 2 | 1 | 71628-6421G4-5-01 |
| 4 | CONTACT PIN | NOTE 3 | NOTE 4 | 1 | 71628-6421G4-4 |
| 3 | INSULATOR | NOTE 5 | NATURAL | 1 | 71628-6421G4-3-50T |
| 2 | BODY | NOTE 1 | NOTE 2 | 1 | 71628-6000-2 |
| 1 | HOUSING | NOTE 1 | NOTE 2 | 1 | 71628-6421G4-1 |
| NO. | DESCRIPTION | MATERIAL | FINISH | Q'TY | DRAWING NO. |

| DIMENSIONS ARE IN MILLIMETERS | | | |
|---------------------------------------|---|------|--|
| UNLESS OTHERWISE SPECIFIED TOLERANCES | | | |
| 0.5-6 | = | ±0.2 | |
| 6-30 | = | ±0.4 | |
| 30-120 | = | ±0.6 | |
| 120-315 | = | ±1 | |
| 315-1000 | = | ±1.6 | |
| 1000-2000 | = | ±2.4 | |

| PART NO. | |
|----------|----------------|
| APPROVED | DATE 02-06-'15 |
| CHECKED | DATE 02-06-'15 |
| DRAWN | DATE 02-06-'15 |

| TITLE | |
|--|--|
| TNC BULKHEAD CRIMP JACK (FOR RG-178, 196 CABLE) | |
| DRAWING NO. 71628-6421G4-01-50 | |
| FILE NO. R:\D\G\DWG\71628\6421G4\01\50 | |

| SCALE | ISSUE | A |
|-------|-------|---|
| 2.5/1 | | |