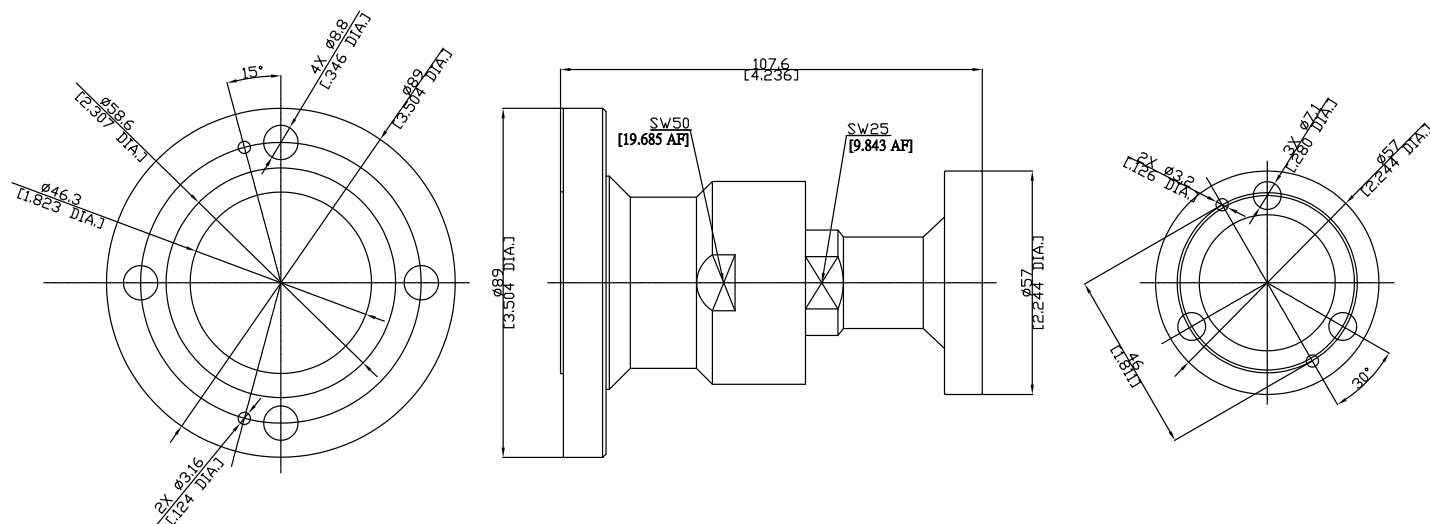


EIA 7/8" flange / EIA 1 5/8" flange
Straight adaptor DC- 3 GHz VSWR ≤ 1.07

AD-EIA78EIA1585A / G3-G3



All dimensions are in mm [inch]

Tolerances according to DIN ISO 2768-mH

Interface

EIA 7/8" according to

N/A

EIA 1 5/8" according to

N/A

Electrical Data

Impedance

50 Ω

Frequency

DC to 3 GHz

VSWR (Return loss)

≤ 1.07 (≥ 29.42 dB)

Dielectric Withstanding Voltage

≥ 6000V RMS (50Hz; @ sea level)

Working Voltage

≤ 2100V RMS (50Hz; @ sea level)

Dielectric Resistance

≥ 5000MΩ

Average Power

3.4KW @900MHz

Peak Power Maximum

90KW

Center contact resistance

≤ 1.5mΩ

Outer contact resistance

≤ 1.5mΩ

Mechanical Data

Mating cycles

EIA 7/8" side
≥ 100

EIA 1 5/8" side
≥ 100

Environmental Data

Temperature Range

-45°C to +85°C

IP rating

IP67

RoHS

compliant

EIA 7/8" flange / EIA 1 5/8" flange
Straight adaptor DC- 3 GHz VSWR \leq 1.07

AD-EIA78EIA1585A / G3-G3

Material And Plating

Piece Parts (EIA 7/8" flange)	Material	Plating
Centre contact	Phosphor Bronze	Silver
Body	Brass	Nickel
Insulator	PTFE	
Gasket	Silicone Rubber	
Flange nut	Brass	Nickel
Hardware kit (bolts, nuts, lock washers, and flat washers)	Stainless steel	
Piece Parts (EIA 1 5/8" flange)	Material	Plating
Centre contact	Phosphor Bronze	Silver
Body	Brass	Nickel
Insulator	PTFE	
Gasket	Silicone Rubber	
Flange nut	Brass	Nickel
Hardware kit (bolts, nuts, lock washers, and flat washers)	Stainless steel	

Packing

Single or 100