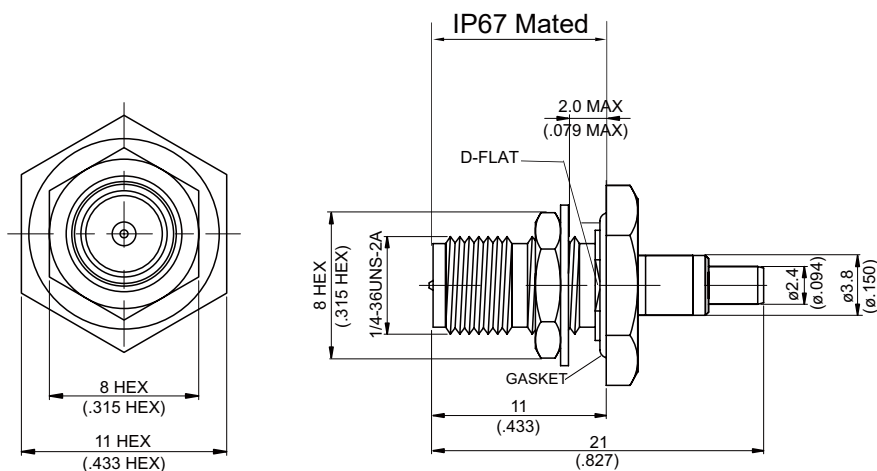


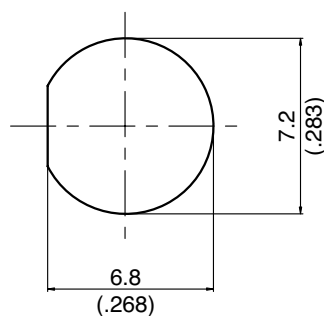
SMA8305A-0178

SMA Jack Crimp Bulkhead For RG178, RG178-FEP
IP67 mated; 2.4Ghz VSWR 1.2

50Ω



MOUNTING HOLE



| Parts | Material | Plating (Micro-inch) |
|-------------|------------------|--|
| Ferrule | Brass | Gold 4 Over Nickel Phosphorous Alloy 80 Over Copper 20 |
| Nut | Brass | Gold 4 Over Nickel Phosphorous Alloy 80 Over Copper 20 |
| Hex Nut | Brass | Gold 4 Over Nickel Phosphorous Alloy 80 Over Copper 20 |
| Lock Washer | Brass | Gold 4 Over Nickel Phosphorous Alloy 80 Over Copper 20 |
| Gasket | Silicone | |
| Contact Pin | Beryllium Copper | Gold 4 Over Nickel Phosphorous Alloy 80 Over Copper 20 |
| Insulator | Teflon | |
| Body | Brass | Gold 4 Over Nickel Phosphorous Alloy 80 Over Copper 20 |

Suitable Cables: RG178, RG178-FEP, RG196

This part number complies with RoHS.

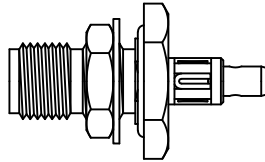

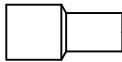

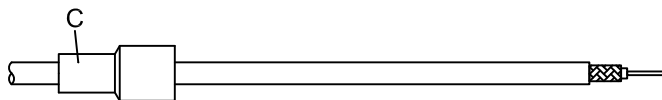
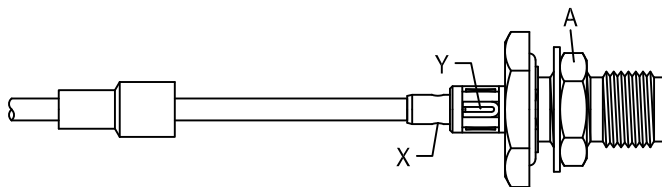
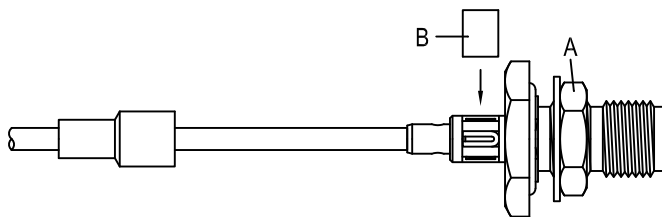
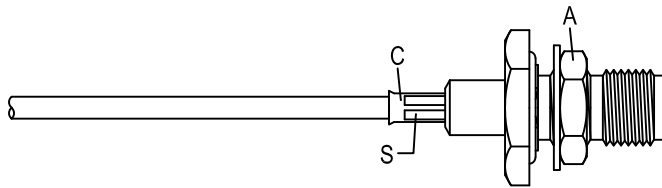
Notice: JYEBAO reserves the right to make modifications deemed appropriate.

| SMA | SMA8305A-0178 |
|--|---------------|
| <div>Interface</div> MIL-STD-348B Mechanically compatible with 2.92 & 3.5 | |
| <div>Electrical Data</div> Impedance 50Ω Frequency range DC to 2.4GHz VSWR ≤ 1.2 (DC to 2.4GHz) Insertion loss $\leq 0.04 \times \sqrt{f(\text{GHz})}$ dB Insulation resistance $\geq 5000\text{M}\Omega$ Contact resistance inner conductor $\leq 3\text{m}\Omega$ Contact resistance outer conductor $\leq 2\text{m}\Omega$ Dielectric withstanding voltage (at sea level) 750 V rms Working voltage (at sea level) 250 V rms | |
| <div>Mechanical Data</div> Recommended coupling nut torque 4 inch lbs Coupling proof torque 5.3 inch lbs Coupling nut retention force ≥ 60.7 lbs Contact Captivation-axial ≥ 6.1 lbs Durability (mating) ≥ 100 | |
| <div>Environmental Data</div> Temperature range -65°C to +165°C Thermal shock MIL-STD-202, Method 107, Condition B Moisture resistance MIL-STD-202, Method 106 Corrosion MIL-STD-202, Method 101, Condition B RoHS Compliant | |
| <div>Tooling</div> Locator tool ST-011 Soldering fixture ST-008 Insert for RG178 cable ST-178 | |

Notice: JYEBAO reserves the right to make modifications deemed appropriate.

JYE BAO CO., LTD.

CABLE ASSEMBLY INSTRUCTION

| | | | | | |
|---|--|--|---|---------|---|
| SMA8305A-0178 | | DATE | 2014/04/29 | REV | — |
| A | | B | C | | |
|  | |  |  | | |
| BODY + GASKET + WASHER + HEX NUT | | COVER | FERRULE | | |
| DIAGRAM | | ASSEMBLY INSTRUCTION | | | |
|  | | Step 1: STRIP AS SHOWN. | | | |
|  | | Step 2: SLIDE FERRULE "C" OVER CABLE . | | | |
|  | | Step 3: SLIDE CABLE INTO CONNECTOR BODY "A" AND SOLDER IN "X" AND "Y". | | | |
|  | | Step 4: PUT COVER "B" ON BODY "A". | | | |
|  | | Step 5: SLIDE FERRULE "C" TOWARDS THE CONNECTOR "A" AND CRIMP IN "S". (USE 2.7mm/0.106inch HEX SECTION OF INSERT-A) | | | |
| This part number complies with RoHS. Notice: JYEBAO reserves the right to make modifications deemed appropriate. | | | | | |
| APPROVED | | CHECKED | | DRAWING | |
| | | | | Albert | |