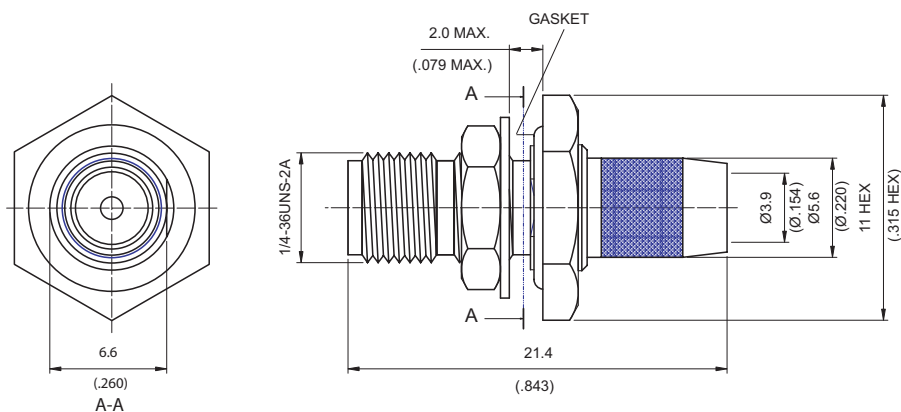
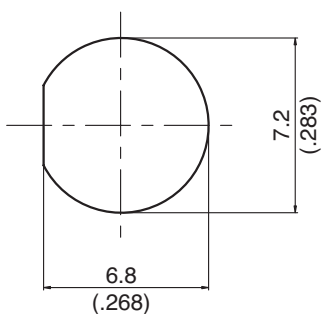


SMA9105-L240

SMA Reverse Polarity Jack Crimp For Bulkhead 50Ω



MOUNTING HOLE :



Parts	Material	Plating(Micro-inch)
Ferrule	Brass	Gold 5 Over Nickel 50 Over Copper 50
Contacy Body	Brass	Gold 5 Over Nickel 50 Over Copper 50
Hex Nut	Brass	Gold 5 Over Nickel 50 Over Copper 50
Lock Washer	Brass	Gold 5 Over Nickel 50 Over Copper 50
Gasket	Silicon	
Contact Pin	Brass	Gold 20 Over Nickel 50 Over Copper 50
Insulator	Teflon	
Body	Brass	Gold 5 Over Nickel 50 Over Copper 50

Weight:

Suitable Cables: LMR240, JBY240

This part number complies with RoHS.

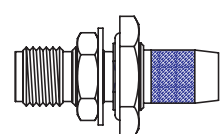
Notice: JYEBAO reserves the right to make modifications deemed appropriate.

## CABLE ASSEMBLY INSTRUCTION

SMA9105-L240

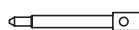
JYE BAO CO., LTD.  
TAIPEI TAIWAN R.O.C

A



BODY+HEX NUT  
+WASHER+GASKET

B



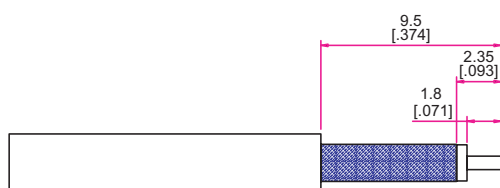
CONTACT PIN

C



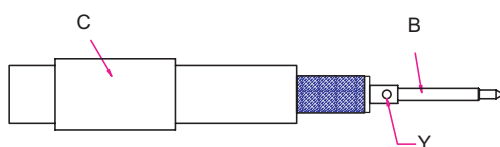
FERRULE

### DIAGRAM

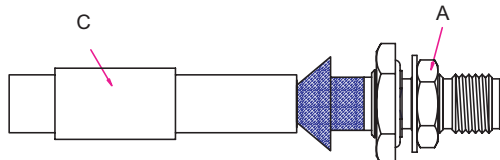


### ASSEMBLY INSTRUCTION

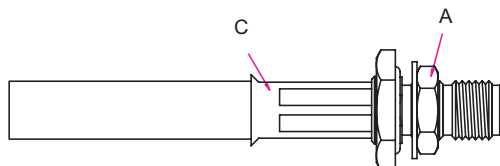
Step 1: STRIP AS SHOWN .



Step 2: SLIDE FERRULE " C " OVER CABLE.  
Step 3: PUT PIN " B " ON CENTER CONDUCTOR AND  
SOLDER IN " Y ".



Step 4: LOOSEN BRAIDING AND SLIDE CONNECTOR " A "  
IN PLACE.



Step 5: SLIDE FERRULE " C " TOWARDS THE CONNECTOR  
" A " AND CRIMP.

This part number complies with RoHS.

Notice: JYEBAO reserves the right to make modifications deemed appropriate.