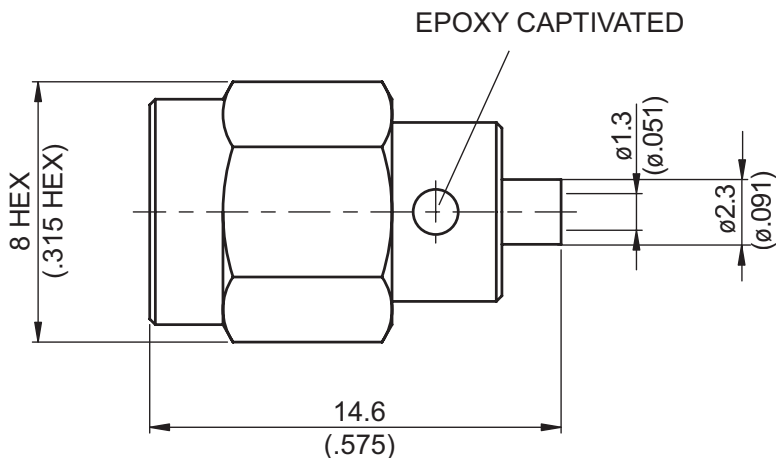


SMA3300-0047	SMA Plug Solder	50Ω																					
 <p>Technical drawing of the SMA Plug Solder. The drawing shows a side view of the component with the following dimensions and features:</p> <ul style="list-style-type: none"> Overall length: 14.6 (.575) Hexagonal section height: 8 HEX (.315 HEX) Threaded section diameter: $\phi 1.3$ ($\phi .051$) Threaded section length: 2.3 ($\phi .091$) Feature: EPOXY CAPTIVATED (pointing to the central hole in the hexagonal section) 																							
<table border="1"> <thead> <tr> <th>Parts</th><th>Material</th><th>Plating (Micro-inch)</th></tr> </thead> <tbody> <tr> <td>Contact Pin</td><td>Brass</td><td>Gold 20 Over Nickel 50 Over Copper 50</td></tr> <tr> <td>Renber Ring</td><td>Beryllium Copper</td><td>Tin-Zinc-Copper-Alloy 100 Over Copper 50</td></tr> <tr> <td>Gasket</td><td>Silicon</td><td></td></tr> <tr> <td>Insulator</td><td>Teflon</td><td></td></tr> <tr> <td>Body</td><td>Brass</td><td>Gold 5 Over Nickel 50 Over Copper 50</td></tr> <tr> <td>Coupling Nut</td><td>Brass</td><td>Gold 5 Over Nickel 50 Over Copper 50</td></tr> </tbody> </table>			Parts	Material	Plating (Micro-inch)	Contact Pin	Brass	Gold 20 Over Nickel 50 Over Copper 50	Renber Ring	Beryllium Copper	Tin-Zinc-Copper-Alloy 100 Over Copper 50	Gasket	Silicon		Insulator	Teflon		Body	Brass	Gold 5 Over Nickel 50 Over Copper 50	Coupling Nut	Brass	Gold 5 Over Nickel 50 Over Copper 50
Parts	Material	Plating (Micro-inch)																					
Contact Pin	Brass	Gold 20 Over Nickel 50 Over Copper 50																					
Renber Ring	Beryllium Copper	Tin-Zinc-Copper-Alloy 100 Over Copper 50																					
Gasket	Silicon																						
Insulator	Teflon																						
Body	Brass	Gold 5 Over Nickel 50 Over Copper 50																					
Coupling Nut	Brass	Gold 5 Over Nickel 50 Over Copper 50																					
Weight: 2.54 g Suitable Cables: Semi-rigid.047																							

This part number complies with RoHS.

Notice: JYEBAO reserves the right to make modifications deemed appropriate.

CABLE ASSEMBLY INSTRUCTION

SMA3300-0047

JYE BAO CO., LTD.

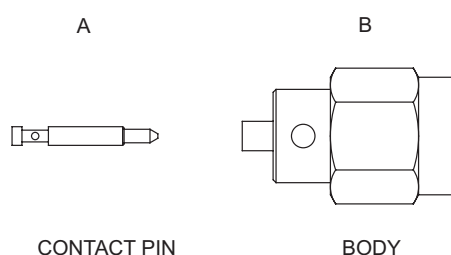


DIAGRAM	ASSEMBLY INSTRUCTION
	<p>Step 1: STRIP AS SHOWN.</p>
	<p>Step 2: PUT 0.55 MM GAGE IN PLACE, INSERT CABLE'S CENTER CONDUCTOR INTO CENTER PIN "A" AND SOLDER IN "Y".</p>
	<p>Step 3: SLIDE THE CABLE INTO CONNECTOR BODY "B".</p>
	<p>Step 4: PUT PREPARED CABLE INTO SOLDERING FIXTURE "ST-008" AND LOCK IT. PUT BODY AS SHOWN. Step 5: SCREW LOCATOR TOOL "ST-011" TO THE POSITION AS SHOWN IN "S". SOLDER IN "X" AND PUT EPOXY IN "T".</p>

This part number complies with RoHS.

Notice: JYEBAO reserves the right to make modifications deemed appropriate.