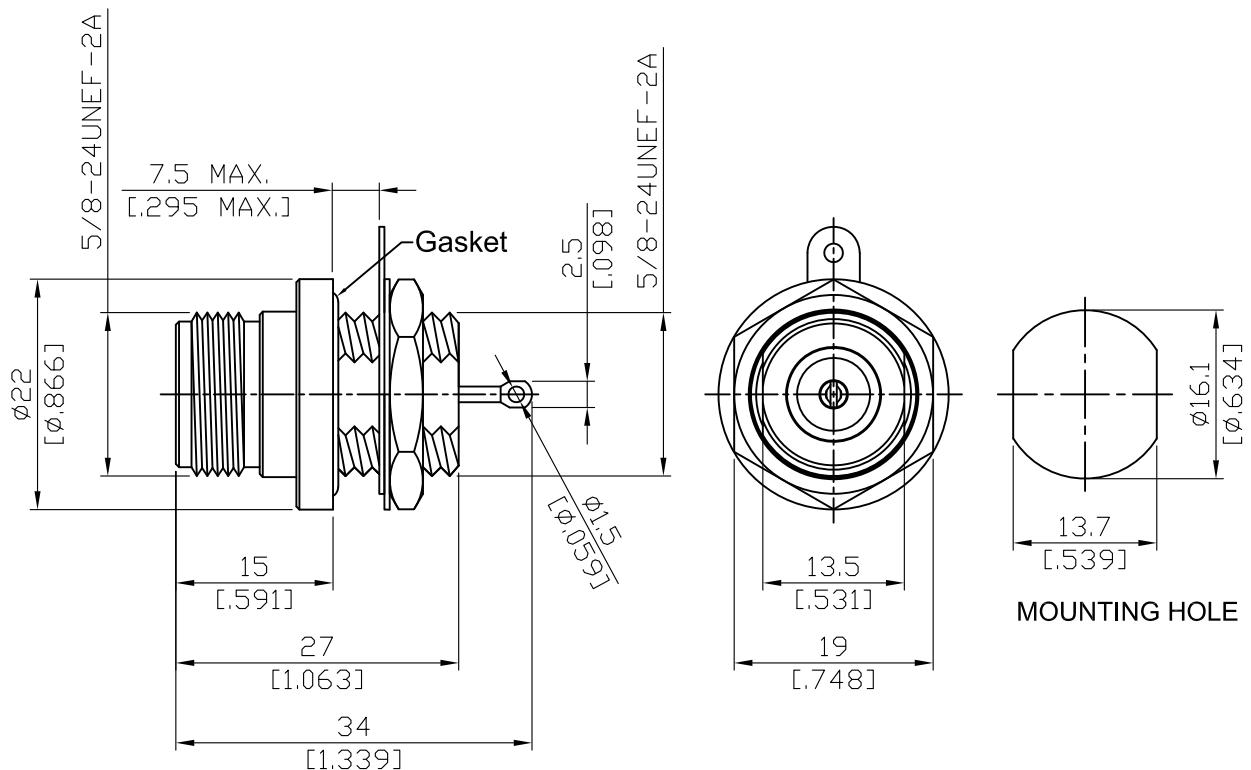


N8505F-0000/HS

N Jack Bulkhead; Hermetic
11GHz VSWR 1.2

50Ω



Hermetic 1×10^{-6} cc/sec of helium at 1atm

Parts	Material	Plating (Micro-inch)
Solder Tag	Brass	Tin-Zinc-Copper-Alloy 100 Over Copper 50
Hex Nut	Brass	Tin-Zinc-Copper-Alloy 100 Over Copper 50
Washer	Brass	Tin-Zinc-Copper-Alloy 100 Over Copper 50
Gasket	Silicone	
Contact Pin	Beryllium Copper	Gold 4 Over Nickel-Phosphorus Alloy 80 Over Copper 20
Insulator	Teflon	
Body	Brass	Tin-Zinc-Copper-Alloy 100 Over Copper 50

This part number complies with RoHS.

Notice: JYEBAO reserves the right to make modifications deemed appropriate.

N	N8505F-0000/HS																		
<div>Interface</div> MIL-STD-348B																			
<div>Electrical Data</div> <table> <tr> <td>Impedance</td><td>50Ω</td></tr> <tr> <td>Frequency range</td><td>DC to 11GHz</td></tr> <tr> <td>VSWR</td><td>≤1.2 (DC to 11GHz)</td></tr> <tr> <td>Insertion loss</td><td>≤0.05 x √f(GHz) dB</td></tr> <tr> <td>Insulation resistance</td><td>≥5000MΩ</td></tr> <tr> <td>Contact resistance inner conductor</td><td>≤1.5mΩ</td></tr> <tr> <td>Contact resistance outer conductor</td><td>≤1mΩ</td></tr> <tr> <td>Dielectric withstanding voltage (at sea level)</td><td>2500 V rms</td></tr> <tr> <td>Working voltage (at sea level)</td><td>1000 V rms</td></tr> </table>		Impedance	50Ω	Frequency range	DC to 11GHz	VSWR	≤1.2 (DC to 11GHz)	Insertion loss	≤0.05 x √f(GHz) dB	Insulation resistance	≥5000MΩ	Contact resistance inner conductor	≤1.5mΩ	Contact resistance outer conductor	≤1mΩ	Dielectric withstanding voltage (at sea level)	2500 V rms	Working voltage (at sea level)	1000 V rms
Impedance	50Ω																		
Frequency range	DC to 11GHz																		
VSWR	≤1.2 (DC to 11GHz)																		
Insertion loss	≤0.05 x √f(GHz) dB																		
Insulation resistance	≥5000MΩ																		
Contact resistance inner conductor	≤1.5mΩ																		
Contact resistance outer conductor	≤1mΩ																		
Dielectric withstanding voltage (at sea level)	2500 V rms																		
Working voltage (at sea level)	1000 V rms																		
<div>Mechanical Data</div> <table> <tr> <td>Recommended coupling nut torque</td><td>6 to 10 inch lbs</td></tr> <tr> <td>Coupling proof torque</td><td>15 inch lbs</td></tr> <tr> <td>Coupling nut retention force</td><td>≥101.2 lbs</td></tr> <tr> <td>Contact captivation-axial</td><td>≥6.3 lbs</td></tr> <tr> <td>Durability (mating)</td><td>≥500</td></tr> </table>		Recommended coupling nut torque	6 to 10 inch lbs	Coupling proof torque	15 inch lbs	Coupling nut retention force	≥101.2 lbs	Contact captivation-axial	≥6.3 lbs	Durability (mating)	≥500								
Recommended coupling nut torque	6 to 10 inch lbs																		
Coupling proof torque	15 inch lbs																		
Coupling nut retention force	≥101.2 lbs																		
Contact captivation-axial	≥6.3 lbs																		
Durability (mating)	≥500																		
<div>Environmental Data</div> <table> <tr> <td>Temperature range</td><td>-65°C to +165°C</td></tr> <tr> <td>Thermal shock</td><td>MIL-STD-202, Method 107, Condition B</td></tr> <tr> <td>Moisture resistance</td><td>MIL-STD-202, Method 106</td></tr> <tr> <td>Corrosion</td><td>MIL-STD-202, Method 101, Condition B</td></tr> <tr> <td>RoHS</td><td>Compliant</td></tr> </table>		Temperature range	-65°C to +165°C	Thermal shock	MIL-STD-202, Method 107, Condition B	Moisture resistance	MIL-STD-202, Method 106	Corrosion	MIL-STD-202, Method 101, Condition B	RoHS	Compliant								
Temperature range	-65°C to +165°C																		
Thermal shock	MIL-STD-202, Method 107, Condition B																		
Moisture resistance	MIL-STD-202, Method 106																		
Corrosion	MIL-STD-202, Method 101, Condition B																		
RoHS	Compliant																		
<div>Tooling</div>																			

Notice: JYEBAO reserves the right to make modifications deemed appropriate.