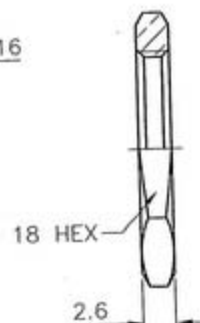
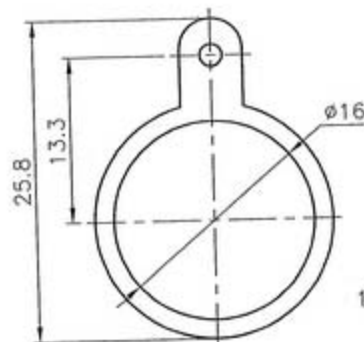
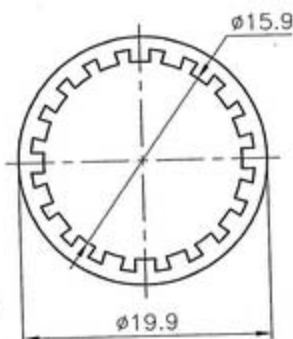
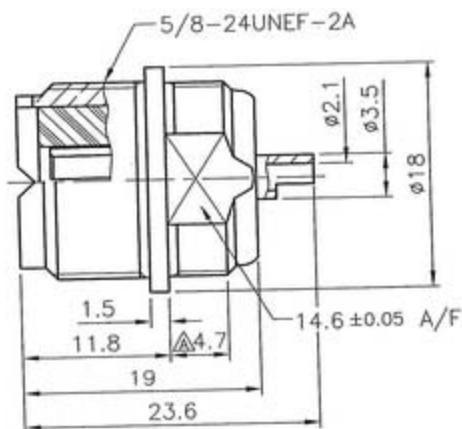


FOR CUSTOMER

REVISIONS

ISS SYMBOL DESCRIPTION DATE

A4 增加尺寸標註 4.7 \05/09/08'

REMARK: RoHS COMPLIANT
(符合 RoHS)

The dielectric withstanding voltage is 1500 VRMS min. at sea level.

NOTES: FINISH (PLATING THICKNESS IN MICRO-INCHES)

1. BRASS PER QQ-B-626

2. NICKEL PL 70 MIN THICK OVER COPPER STRIKE

1. MAX. PANEL THICKNESS=2.6mm
(最大板厚)

					DIMENSIONS ARE IN MILLIMETERS				PART NO.			
					UNLESS OTHERWISE SPECIFIED TOLERANCES (一般公差) 0.5~6 = ±0.2 >6~30 = ±0.4 >30~120 = ±0.6 >120~315 = ±1 >315~1000 = ±1.6 ANGLES(角度) = ±5°				APPROVED		DATE	
NUT									DATE		05/09/08'	
TAG									DATE		05/09/08'	
WASHER									DATE		05/09/08'	
CONTACT PIN									DATE		05/09/08'	
INSULATOR					DRAWN				DATE			
BODY					DATE				05/09/08'			
					Alvin				05/09/08'			