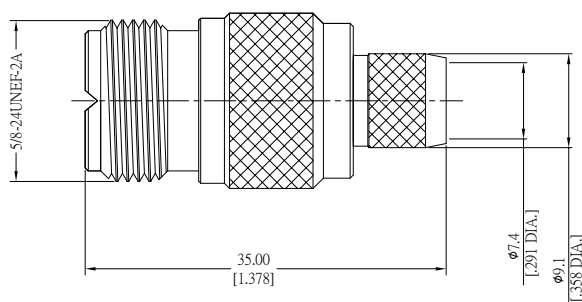
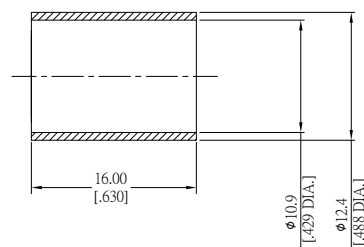


UHF Jack (Female) Cable Connector

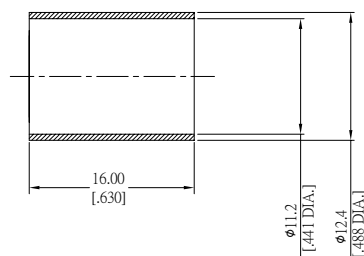
UHF2CN0-G213-214A/H4



RG-213 Ferrule



RG-214 Ferrule



All dimensions are in mm [inch]

Tolerances according to DIN ISO 2768-mH

Interface

According to IEC 60169-12

Electrical Data

Impedance non-constant
Frequency DC to 300 MHz

Mechanical Data

Coupling mechanisms Screw-lock
Centre contact Solder, Crimp
Cable entry Crimp

Environmental Data

Temperature range -55°C to +149°C
RoHS compliant
REACH compliant

Material And Plating

Connector parts	Material	Plating
Centre contact	Phosphor Bronze	Gold plating(Nickel underplated)
Body	Brass	Copper-Tin-Zinc Alloy
Insulator	PTFE	

Suitable Cables

RG-213, RG-214, RG-393

Packing

Single or 100