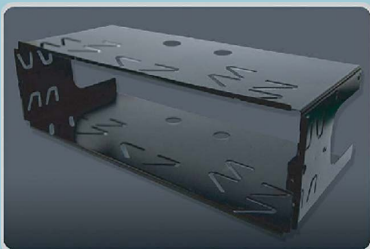




The new Citizen Band(CB) Radio from Danita sets remarkable new standards in the industry with its SMT and the most updated technology in terms of design, features and performances. 840, Danita's Flagehip model, has new design concept with Front Speaker, Full DIN-Size, CTCSS, VOX and many other amazing features, You can experience many operations that have never been tried in any CB radio before such as changeable backlighting color, tone selection, compander selection, frequency readouts and etc.

Din Plate Included



Front Speaker with Changeable Backlighting System



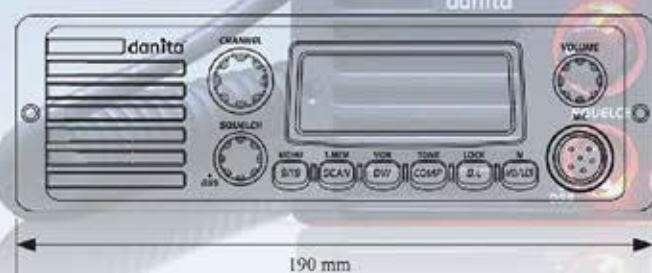
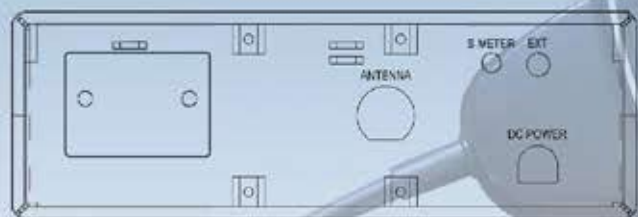
MULTI - BAND CB RADIO

GENERAL SPECIFICATIONS

• Channel	40
• Frequency Range	26.965 MHz ~ 27.405 MHz
• Operating mode	F3E (FM), A3E (AM)
• Frequency Control	PLL Synthesizer
• Frequency Tolerance	0.002%
• Operating Temperature Range	-10 to + 55°C
• Microphone	Plug-in Type
• Input Voltage	12/24V
• Size	165 (W) * 190 (L) * 58(H)
• Weight	990g
• Antenna Connector	SO-239 type

►► FEATURE

- Multi Channel AM/FM CB Transceiver
- Multiple Bands
- 4 Watts Output Power
- AM/FM Operation
- 38 CTCSS Tone
- Menu Mode:
(Beep Tone On/Off, TOT, Backlight Dimmer)
- Memory
- Din-Size
- Quick Channel Up/Down
- Speaker Mute
- Scan
- Keypad Lock and Remote Lock
- Emergency Channel
- External Speaker Jack
- Dual Watch
- Manual Squelch Control / DSS
- Comander IC
- 3 Color Backlighting
- Front Speaker
- VOX



TRANSMITTER SPECIFICATIONS

Power output	Duty cycle 10% 4 W @ 13.8V DC
Modulation	AM: from 85% to 95% FM: 1.8KHz ± 0.2KHz
Frequency Response	300Hz to 3000Hz
Output Impedance	50ohms, Unbalanced
Harmonic Suppression	Less than -36dBm
Current Drain	AM Full Mod. 1.6A Max.

RECEIVER SPECIFICATIONS

Receiving system	Dual conversion superheterodyne
IF Frequencies	Double Conversion 1st 10.695MHz 2nd 455KHz
Sensitivity	0.7µV for 10dB(S+N)/N in AM Mode 0.5µV for 20dB SINAD in FM Mode
Audio Output Power @10% THD	2.0W @ 8 Ohm
Audio Distortion	Less than 8% @ 1KHz
Image rejection	48 dBm
Adjacent Channel Rejection	60 dBm
Conducted Spurious	Less than -57dBm
Frequency Response	300 to 2500Hz
Built-in Speaker	8 ohms, round
Squelch	Adjustable: Threshold less than 1µV