

General Specification

Model	AM780T
Frequency	VHF: 136-174 MHz UHF: 350-390 MHz,400-470MHz, 450-520MHz
Channel Capacity	1600 CH 100 zone
Channel Spacing	25 kHz/ 12.5 kHz
Operating Temperature	-25°C~+60 °C
Frequency Stability	±1.5ppm
Operating Voltage	13.8VDC ±15%
Antenna Impedance	50Ω
Microphone Impedance	2.2KΩ
Voltage	DC 10.8V-----15.6V
Dimensions (W x L x H)	166mmx157mmx56mm
Weight	1122.7g

Receiver

Sensitivity	Analog $\leq 0.22\mu\text{V}$ @ 25kHz $\leq 0.25\mu\text{V}$ @ 12.5kHz (12 dB SINAD)
SNR	Digital 0.22 μV (BER 5%) ≥ 45 dB @ 25 kHz ≥ 40 dB @ 12.5 kHz
Adjacent Channel Selectivity	≥ 70 dB @ 25 kHz ≥ 60 dB @ 12.5 kHz
Intermodulation	≥ 70 dB @ 25 kHz ≥ 60 dB @ 12.5 kHz
Spurious Rejection	≥ 65 dB
Audio Output Power	≥ 3000 mW
Audio Distortion	$\leq 5\%$

Standard accessories



Install Kit



Power source
Extension Cord



AS-AR01
Speaker Microphone

Transmitter

RF Output Power	25/50 W (High Power) 5 W (Low Power)
Modulation Mode	16K ϕ F3E @ 25 kHz 8K ϕ F3E @ 12.5 kHz
4FSK Digital Modulation	12.5 kHz Data: 7K60FXD 12.5 kHz Voice and Data: 7K60FXE
Digital Vocoder Type	AMBE ++
Digital Protocol	ETSI-TS102 361-1,-2
Harmonic	≤ 70 dB
Residual FM	≤ -45 dB @ 25 kHz ≤ -40 dB @ 12.5 kHz
Audio Distortion	$\leq 5\%$
Max Frequency Deviation	≤ 5 kHz @ 25 kHz ≤ 2.5 kHz @ 12.5 kHz

• All specifications are subject to change without notice due to continuous development.

Optional accessories



AD-UC
Programming cable

Dealer Area



ABELL INDUSTRIES CO., LTD

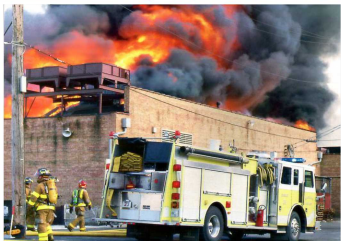
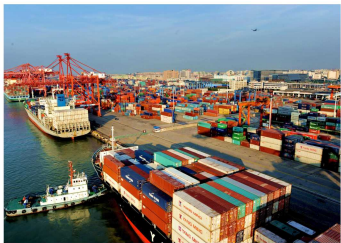
Website:www.abell.com.cn E-mail:sales@abell.com.cn

ABELL®



AM780T

- ▶ TDMA, 2 slots in direct mode
- ▶ 1600 channel 100 zone
- ▶ 2.0" large LCD display
- ▶ Phone dial by DTMF via ABELL DMR repeater
- ▶ GPS/ Beidou (optional)



Versatile functions
GPS, remote control, lone worker, encryption,
Alarm, record, phone dial, text message, etc...



3 programmable keys,
One-Click call, private call,
group call, all call

3W audio power, digital voice
Clear and loud enough for noisy case

2.0" large LCD display, bright color
1600 channel, text message
Time display

Features:

DMR & analog dual mode, TDMA

2 slots in direct mode, 2 group of talking simultaneous at the same frequency
double efficiency for communication
save cost for frequency license application ensure the fluency at rush hour of communication

Selective call

User could generate the private call or group call by input the ID from the keypad convenient and efficient

Remote control

Versatile remote control function include: alarm, remote monitor, radio check, remote kill, remote stun, remote revive, call alert, text message, and work alone

Phone dial by DTMF

Via ABELL DMR repeater R-80, dial the cable phone or cell phone by DTMF input or One-click call. Provide effective inter-connection to public phone system

GPS position service in real-time (Optional)

GPS position tracking update in real time

